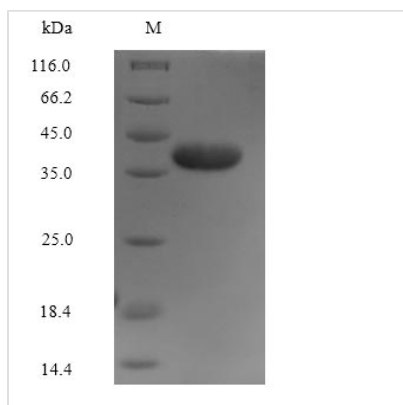




Recombinant Human Annexin A2 (ANXA2)

Product Code	CSB-MP001840HU
Relevance	Calcium-regulated membrane-binding protein whose affinity for calcium is greatly enhanced by anionic phospholipids. It binds two calcium ions with high affinity. May be involved in heat-stress response. Inhibits PCSK9-enhanced LDLR degradation, probably reduces PCSK9 protein levels via a translational mechanism but also competes with LDLR for binding with PCSK9 (PubMed:18799458, PubMed:24808179, PubMed:22848640).
Abbreviation	Recombinant Human ANXA2 protein
Storage	The shelf life is related to many factors, storage state, buffer ingredients, storage temperature and the stability of the protein itself. Generally, the shelf life of liquid form is 6 months at -20°C/-80°C. The shelf life of lyophilized form is 12 months at -20°C/-80°C.
Uniprot No.	P07355
Product Type	Recombinant Proteins
Immunogen Species	Homo sapiens (Human)
Purity	Greater than 90% as determined by SDS-PAGE.
Sequence	STVHEILCKLSLEGDHSTPPSAYGSVKAYTNFDAERDALNIETAIKTKGVDEVTI VNILTNRSNAQRQDIAFAYQRRTKKELASALKSALSGHLETVILGLLKTPAQYDA SELKASMKGGLGTDEDSLIEIICSRTNQELQEINRVYKEMYKTDLEKDIISDTSGD FRKLMVALAKGRRRAEDGSVIDYELIDQDARDLYDAGVKRKGTDVPKWISIMTE RSVPHLQKVFDYKSYSPYDMLSEIRKEVKGDLENALNLVQCQIQNKPLYFAD RLYDSMKGKGTDRDKVLIRIMVSRSEVDMLKIRSEFKRKYGKSLYYYIQQDTKG DYQKALLYLCGGDD
Research Area	Signal Transduction
Source	Mammalian cell
Target Names	ANXA2
Expression Region	2-339aa
Notes	Repeated freezing and thawing is not recommended. Store working aliquots at 4°C for up to one week.
Tag Info	N-terminal 6xHis-Myc-tagged
Mol. Weight	42.5kDa
Protein Length	Full Length of Mature Protein
Image	



(Tris-Glycine gel) Discontinuous SDS-PAGE (reduced) with 5% enrichment gel and 15% separation gel.

Shelf Life

The shelf life is related to many factors, storage state, buffer ingredients, storage temperature and the stability of the protein itself. Generally, the shelf life of liquid form is 6 months at -20°C/-80°C. The shelf life of lyophilized form is 12 months at -20°C/-80°C.