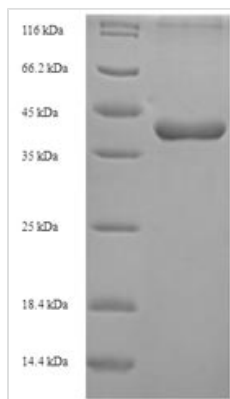




Recombinant Mouse CCN family member 5 (Ccn5)

Product Code	CSB-EP896674MO
Relevance	May play an important role in modulating bone turnover. Promotes the adhesion of osteoblast cells and inhibits the binding of fibrinogen to integrin receptors. In addition, inhibits osteocalcin production .
Abbreviation	Recombinant Mouse Ccn5 protein
Storage	The shelf life is related to many factors, storage state, buffer ingredients, storage temperature and the stability of the protein itself. Generally, the shelf life of liquid form is 6 months at -20°C/-80°C. The shelf life of lyophilized form is 12 months at -20°C/-80°C.
Uniprot No.	Q9Z0G4
Alias	CCN family member 5Connective tissue growth factor-like protein ;CTGF-L
Product Type	Recombinant Protein
Immunogen Species	Mus musculus (Mouse)
Purity	Greater than 90% as determined by SDS-PAGE.
Sequence	QLCPAPCACPWTPPPQCPPGVPLVLDGCGCCRVCCARRLGESCDHLHVCDPSQ GLVCQPGAGPSGRGAVCLFEEDDGSCEVNGRRYLDGETFKPNCRVLCRCDD GGFTCLPLCSEDVRLPSWDCPRPRRIQVPGRCCEWVCDQAVMQPAIQPSS AQGHQLSALVTPASADGPCPNWSTAWGPCSTTCGLGIATRVSNNQNRFCQLEI QRRLLCLSRPCLASRSHGWSNSAF
Research Area	Others
Source	E.coli
Target Names	Ccn5
Protein Names	Recommended name: WNT1-inducible-signaling pathway protein 2 Short name= WISP-2Alternative name(s): CCN family member 5 Connective tissue growth factor-like protein Short name= CTGF-L
Expression Region	24-251aa
Notes	Repeated freezing and thawing is not recommended. Store working aliquots at 4°C for up to one week.
Tag Info	N-terminal 6xHis-SUMO-tagged
Mol. Weight	40.5kDa
Protein Length	Full Length of Mature Protein
Image	



(Tris-Glycine gel) Discontinuous SDS-PAGE (reduced) with 5% enrichment gel and 15% separation gel.

Reconstitution

We recommend that this vial be briefly centrifuged prior to opening to bring the contents to the bottom. Please reconstitute protein in deionized sterile water to a concentration of 0.1-1.0 mg/mL. We recommend to add 5-50% of glycerol (final concentration) and aliquot for long-term storage at -20°C/-80°C. Our default final concentration of glycerol is 50%. Customers could use it as reference.

Shelf Life

The shelf life is related to many factors, storage state, buffer ingredients, storage temperature and the stability of the protein itself. Generally, the shelf life of liquid form is 6 months at -20°C/-80°C. The shelf life of lyophilized form is 12 months at -20°C/-80°C.