

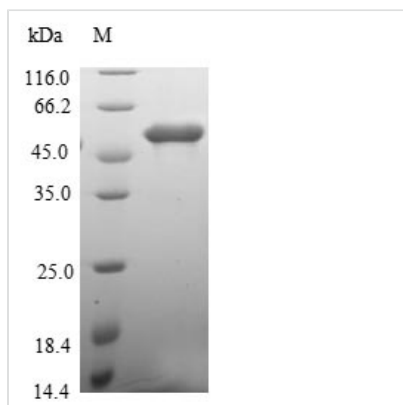


# Recombinant Human Protein MEMO1 (MEMO1)

<b>Product Code</b>	CSB-EP896500HU
<b>Relevance</b>	May control cell migration by relaying extracellular chemotactic signals to the microtubule cytoskeleton. Mediator of ERBB2 signaling. The MEMO1-RHOA-DIAPH1 signaling pathway plays an important role in ERBB2-dependent stabilization of microtubules at the cell cortex. It controls the localization of APC and CLASP2 to the cell membrane, via the regulation of GSK3B activity. In turn, membrane-bound APC allows the localization of the MACF1 to the cell membrane, which is required for microtubule capture and stabilization. Is required for breast carcinoma cell migration.
<b>Abbreviation</b>	Recombinant Human MEMO1 protein
<b>Storage</b>	The shelf life is related to many factors, storage state, buffer ingredients, storage temperature and the stability of the protein itself. Generally, the shelf life of liquid form is 6 months at -20°C/-80°C. The shelf life of lyophilized form is 12 months at -20°C/-80°C.
<b>Uniprot No.</b>	Q9Y316
<b>Alias</b>	C21orf19-like protein Hepatitis C virus NS5A-transactivated protein 7
<b>Product Type</b>	Recombinant Protein
<b>Immunogen Species</b>	Homo sapiens (Human)
<b>Purity</b>	Greater than 90% as determined by SDS-PAGE.
<b>Sequence</b>	MSNRVVCREASHAGSWYTASGPQLNAQLEGWLSQVQSTKRPARAIAPHAGY TYCGSCAAHAYKQVDPSITRRIFILGPSHHVPLSRCALSSVDIYRTPLYDLRIDQ KIYGELWKTGMFERMSLQTDDEHSEIEMHLPYTAKAMESHKDEFTIIPVLVGAL SESKEQEFGLFSKYLDPSNLFVVSDFCHWGQRFYRYSYYDESQGEIYRSIE HLDKMGMSIIEQLDPVSFSNYLK KYHNTICGRHPIGVLLNAITELQKNGMNMSF SFLNYAQSSQCRNWQDSSVSYAAGALTVH
<b>Research Area</b>	Signal Transduction
<b>Source</b>	E.coli
<b>Target Names</b>	MEMO1
<b>Protein Names</b>	Recommended name: Protein MEMO1 Alternative name(s): C21orf19-like protein Hepatitis C virus NS5A-transactivated protein 7 Short name= HCV NS5A-transactivated protein 7 Mediator of ErbB2-driven cell motility 1 Short name= Mem
<b>Expression Region</b>	1-297aa
<b>Notes</b>	Repeated freezing and thawing is not recommended. Store working aliquots at 4°C for up to one week.
<b>Tag Info</b>	N-terminal GST-tagged
<b>Mol. Weight</b>	60.7kDa
<b>Protein Length</b>	Full Length



## Image



(Tris-Glycine gel) Discontinuous SDS-PAGE (reduced) with 5% enrichment gel and 15% separation gel.

## Reconstitution

We recommend that this vial be briefly centrifuged prior to opening to bring the contents to the bottom. Please reconstitute protein in deionized sterile water to a concentration of 0.1-1.0 mg/mL. We recommend to add 5-50% of glycerol (final concentration) and aliquot for long-term storage at -20°C/-80°C. Our default final concentration of glycerol is 50%. Customers could use it as reference.

## Shelf Life

The shelf life is related to many factors, storage state, buffer ingredients, storage temperature and the stability of the protein itself. Generally, the shelf life of liquid form is 6 months at -20°C/-80°C. The shelf life of lyophilized form is 12 months at -20°C/-80°C.