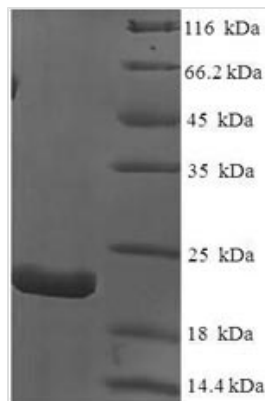




Recombinant Dog Interleukin-18 (IL18)

Product Code	CSB-EP895937DO
Relevance	Augments natural killer cell activity in spleen cells and stimulates interferon gamma production in T-helper type I cells.
Abbreviation	Recombinant Dog IL18 protein
Storage	The shelf life is related to many factors, storage state, buffer ingredients, storage temperature and the stability of the protein itself. Generally, the shelf life of liquid form is 6 months at -20°C/-80°C. The shelf life of lyophilized form is 12 months at -20°C/-80°C.
Uniprot No.	Q9XSR0
Alias	Interferon gamma-inducing factor ;IFN-gamma-inducing factorInterleukin-1 gamma ;IL-1 gamma
Product Type	Recombinant Protein
Immunogen Species	Canis lupus familiaris (Dog) (Canis familiaris)
Purity	Greater than 90% as determined by SDS-PAGE.
Sequence	YFGKLEPKLSIIRNLNDQVLFVNEGNQPVFEDMPDSDCTDNAPHTIFIIYMYKDS LTRGLAVTISVKYKTMSTLSCKNKTISFQKMSPPD SINDEGNDIIFQ RSVPGHD DKIQFESSLYKGHFLACKKENDLFLKILKDKDENGDKSIMFTVQNKS
Research Area	Others
Source	E.coli
Target Names	IL18
Expression Region	37-193aa
Notes	Repeated freezing and thawing is not recommended. Store working aliquots at 4°C for up to one week.
Tag Info	N-terminal 6xHis-tagged
Mol. Weight	22.0kDa
Protein Length	Full Length of Mature Protein

Image



(Tris-Glycine gel) Discontinuous SDS-PAGE (reduced) with 5% enrichment gel and 15% separation gel.



Reconstitution

We recommend that this vial be briefly centrifuged prior to opening to bring the contents to the bottom. Please reconstitute protein in deionized sterile water to a concentration of 0.1-1.0 mg/mL. We recommend to add 5-50% of glycerol (final concentration) and aliquot for long-term storage at -20°C/-80°C. Our default final concentration of glycerol is 50%. Customers could use it as reference.

Shelf Life

The shelf life is related to many factors, storage state, buffer ingredients, storage temperature and the stability of the protein itself. Generally, the shelf life of liquid form is 6 months at -20°C/-80°C. The shelf life of lyophilized form is 12 months at -20°C/-80°C.