



Recombinant Human Fizzy-related protein homolog (FZR1)

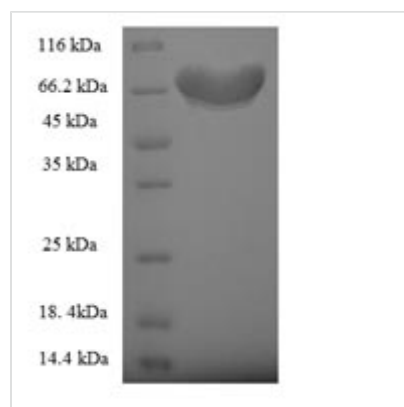
Product Code	CSB-EP892473HU
Relevance	Key regulator of ligase activity of the anaphase promoting complex/cyclosome (APC/C), which confers substrate specificity upon the complex. Associates with the APC/C in late mitosis, in replacent of CDC20, and activates the APC/C during anaphase and telophase. The APC/C rains active in degrading substrates to ensure that positive regulators of the cell cycle do not accumulate praturely. At the G1/S transition FZR1 is phosphorylated, leading to its dissociation from the APC/C. Following DNA damage, it is required for the G2 DNA damage checkpoint: its dephosphorylation and reassociation with the APC/C leads to the ubiquitination of PLK1, preventing entry into mitosis.
Abbreviation	Recombinant Human FZR1 protein
Storage	The shelf life is related to many factors, storage state, buffer ingredients, storage temperature and the stability of the protein itself. Generally, the shelf life of liquid form is 6 months at -20°C/-80°C. The shelf life of lyophilized form is 12 months at -20°C/-80°C.
Uniprot No.	Q9UM11
Alias	CDC20-like protein 1Cdh1/Hct1 homolog ;hCDH1
Product Type	Recombinant Protein
Immunogen Species	Homo sapiens (Human)
Purity	Greater than 90% as determined by SDS-PAGE.
Sequence	MDQDYERRLLRQIVIQNENTMPRVTEMRRTLTPASSPVSSPSKHGDRFIPSRA GANWSVNFHRINENEKSPSQNRKAKDATSDNGKDGLAYSALLKNELLGAGIEK VQDPQTEDRRLQPSTPEKKGLFTYSLSTKRSSPDDGNDVSPYSLSPVSNKSQ KLLRSPRKPTRKISKIPFKVLDAPELQDDFYLNLDWSSNLVLSVGLGTCVYLW SACTSQVTRLCDLSVEGDSVTSVGWSEGNLVAVGTHKGFVQIWDAAAGKKL SMLEGHTARVGALAWNAEQLSSGSRDRMILQRDIRTPPLQSERRLQGHRQEV CGLKWSTDHQLLASGGNDNKLLVWNHSSLSPVQQYTEHLAAVKAIWSPHQ HGLLASGGGTADRCIRFWNTLTGQPLQCIDTGSQVCNLAWSKHANELVSTHG YSQNLQILVWKYPSLTQVAKLTGHSYRVLYLAMSPDGEAIVTGAGDETLRFWNV FSKTRSTKESVSVLNLFTIR
Research Area	Cell Biology
Source	E.coli
Target Names	FZR1
Expression Region	1-493aa
Notes	Repeated freezing and thawing is not recommended. Store working aliquots at 4°C for up to one week.
Tag Info	N-terminal 6xHis-SUMO-tagged


Mol. Weight

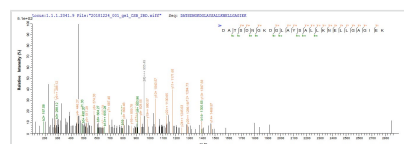
70.8kDa

Protein Length

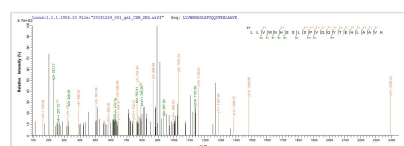
Full Length of Isoform 2

Image


(Tris-Glycine gel) Discontinuous SDS-PAGE (reduced) with 5% enrichment gel and 15% separation gel.



Based on the SEQUEST from database of E.coli host and target protein, the LC-MS/MS Analysis result of CSB-EP892473HU could indicate that this peptide derived from E.coli-expressed Homo sapiens (Human) FZR1.



Based on the SEQUEST from database of E.coli host and target protein, the LC-MS/MS Analysis result of CSB-EP892473HU could indicate that this peptide derived from E.coli-expressed Homo sapiens (Human) FZR1.

Reconstitution

We recommend that this vial be briefly centrifuged prior to opening to bring the contents to the bottom. Please reconstitute protein in deionized sterile water to a concentration of 0.1-1.0 mg/mL. We recommend to add 5-50% of glycerol (final concentration) and aliquot for long-term storage at -20°C/-80°C. Our default final concentration of glycerol is 50%. Customers could use it as reference.

Shelf Life

The shelf life is related to many factors, storage state, buffer ingredients, storage temperature and the stability of the protein itself. Generally, the shelf life of liquid form is 6 months at -20°C/-80°C. The shelf life of lyophilized form is 12 months at -20°C/-80°C.