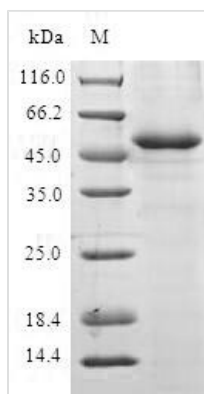




Recombinant Human Anaphase-promoting complex subunit 10 (ANAPC10)

Product Code	CSB-EP892350HU
Relevance	Component of the anaphase promoting complex/cyclosome (APC/C), a cell cycle-regulated E3 ubiquitin ligase that controls progression through mitosis and the G1 phase of the cell cycle. The APC/C complex acts by mediating ubiquitination and subsequent degradation of target proteins: it mainly mediates the formation of 'Lys-11'-linked polyubiquitin chains and, to a lower extent, the formation of 'Lys-48'- and 'Lys-63'-linked polyubiquitin chains.
Abbreviation	Recombinant Human ANAPC10 protein
Storage	The shelf life is related to many factors, storage state, buffer ingredients, storage temperature and the stability of the protein itself. Generally, the shelf life of liquid form is 6 months at -20°C/-80°C. The shelf life of lyophilized form is 12 months at -20°C/-80°C.
Uniprot No.	Q9UM13
Alias	Cyclosome subunit 10
Product Type	Recombinant Protein
Immunogen Species	Homo sapiens (Human)
Purity	Greater than 90% as determined by SDS-PAGE.
Sequence	TTPNKTPPGADPKQLERTGTVREIGSQAVWSLSSCKPGFGVDQLRDDNLETY WQSDGSQPHLVNIQFRRKTTVKTLCIYADYKSDESYTPSKISVRVGNNFHNLQ EIRQLELVEPSGWIHVPLTDNHKKPTRTFMIQIAVLANHQNQRDTHMRQIKIYTP VEESSIGKFPRCTTIDFMMYRSIR
Research Area	Cell Biology
Source	E.coli
Target Names	ANAPC10
Protein Names	Recommended name: Anaphase-promoting complex subunit 10 Short name= APC10 Alternative name(s): Cyclosome subunit 10
Expression Region	1-185aa
Notes	Repeated freezing and thawing is not recommended. Store working aliquots at 4°C for up to one week.
Tag Info	N-terminal GST-tagged
Mol. Weight	48.1kDa
Protein Length	Full Length
Image	



(Tris-Glycine gel) Discontinuous SDS-PAGE (reduced) with 5% enrichment gel and 15% separation gel.

Reconstitution

We recommend that this vial be briefly centrifuged prior to opening to bring the contents to the bottom. Please reconstitute protein in deionized sterile water to a concentration of 0.1-1.0 mg/mL. We recommend to add 5-50% of glycerol (final concentration) and aliquot for long-term storage at -20°C/-80°C. Our default final concentration of glycerol is 50%. Customers could use it as reference.

Shelf Life

The shelf life is related to many factors, storage state, buffer ingredients, storage temperature and the stability of the protein itself. Generally, the shelf life of liquid form is 6 months at -20°C/-80°C. The shelf life of lyophilized form is 12 months at -20°C/-80°C.