

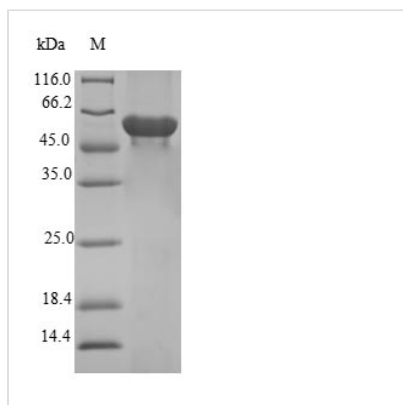


Recombinant Human F-box only protein 2 (FBXO2)

Product Code	CSB-EP892326HU
Relevance	Substrate recognition component of a SCF (SKP1-CUL1-F-box protein) E3 ubiquitin-protein ligase complex that mediates the ubiquitination and subsequent proteasomal degradation of target proteins. Involved in the endoplasmic reticulum-associated degradation pathway (ERAD) for misfolded luminal proteins by recognizing and binding sugar chains on unfolded glycoproteins that are retrotranslocated into the cytosol and promoting their ubiquitination and subsequent degradation. Prevents formation of cytosolic aggregates of unfolded glycoproteins that have been retrotranslocated into the cytosol. Able to recognize and bind denatured glycoproteins, preferentially those of the high-mannose type
Abbreviation	Recombinant Human FBXO2 protein
Storage	The shelf life is related to many factors, storage state, buffer ingredients, storage temperature and the stability of the protein itself. Generally, the shelf life of liquid form is 6 months at -20°C/-80°C. The shelf life of lyophilized form is 12 months at -20°C/-80°C.
Uniprot No.	Q9UK22
Product Type	Recombinant Protein
Immunogen Species	Homo sapiens (Human)
Purity	Greater than 90% as determined by SDS-PAGE.
Sequence	MDGDGDPESVGQPEEASPEEQPEEASAEERPEDQQEEEEAAAAAYLDELP EPLLLRVLAALPAAELVQACRLVCLRWKELVDGAPLWLLKCQEQEGLVPEGGV EEERDHWQQFYFLSKRRRNLLRNPCGEEDLEGWCDVEHGGDGWRVEELPG DSGVEFTHDES VKKYFASSFEWCRKAQVIDLQAEGYWEELDTTQPAIVVKD WYSGRSDAGCLYELTVKLLSEHENVLAEFSSGQVAVPQDSDGGGWMEISHTF TDYGPGRVRFVRFEHGGQDSVYWKGWFGARVTNSSVWVEP
Research Area	Cell Biology
Source	E.coli
Target Names	FBXO2
Protein Names	Recommended name: F-box only protein 2
Expression Region	1-296aa
Notes	Repeated freezing and thawing is not recommended. Store working aliquots at 4°C for up to one week.
Tag Info	N-terminal GST-tagged
Mol. Weight	60.3kDa
Protein Length	Full Length



Image



(Tris-Glycine gel) Discontinuous SDS-PAGE (reduced) with 5% enrichment gel and 15% separation gel.

Reconstitution

We recommend that this vial be briefly centrifuged prior to opening to bring the contents to the bottom. Please reconstitute protein in deionized sterile water to a concentration of 0.1-1.0 mg/mL. We recommend to add 5-50% of glycerol (final concentration) and aliquot for long-term storage at -20°C/-80°C. Our default final concentration of glycerol is 50%. Customers could use it as reference.

Shelf Life

The shelf life is related to many factors, storage state, buffer ingredients, storage temperature and the stability of the protein itself. Generally, the shelf life of liquid form is 6 months at -20°C/-80°C. The shelf life of lyophilized form is 12 months at -20°C/-80°C.