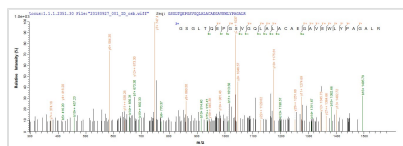




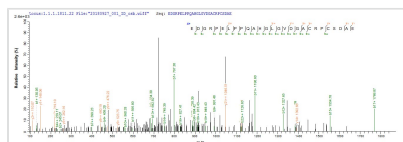
# Recombinant Human Meteorin (METRN)

<b>Product Code</b>	CSB-EP892322HU
<b>Abbreviation</b>	Recombinant Human METRN protein
<b>Storage</b>	The shelf life is related to many factors, storage state, buffer ingredients, storage temperature and the stability of the protein itself. Generally, the shelf life of liquid form is 6 months at -20°C/-80°C. The shelf life of lyophilized form is 12 months at -20°C/-80°C.
<b>Uniprot No.</b>	Q9UJH8
<b>Storage Buffer</b>	Tris-based buffer,50% glycerol
<b>Product Type</b>	Recombinant Proteins
<b>Immunogen Species</b>	Homo sapiens (Human)
<b>Purity</b>	Greater than 85% as determined by SDS-PAGE.
<b>Sequence</b>	GYSEERCSWRGSGLTQEPGSVGQLALACAEGAVEWLYPAGALRLTLGGPDP RARPGIACLRPVRPFAGAQQVFAERAGGALELLAEGPGPAGGRCVRWGP RRALFLQATPHQDISRRVAAFRFELREDGRPELPPQAHGLGVDGACRPCSDA ELLLAACTSDFVIHGIIHGVTHDVELQESVITVVAARVLRQTPLPFQAGRSGDQ GLTSIRTPLRGCVHPGPGTFLFMGWSRFGEARLGCAPRFQEFRRAYEAARAA HLHPCEVALH
<b>Research Area</b>	Neuroscience
<b>Source</b>	E.coli
<b>Target Names</b>	METRN
<b>Protein Names</b>	Recommended name: Meteorin
<b>Expression Region</b>	24-293aa
<b>Notes</b>	Repeated freezing and thawing is not recommended. Store working aliquots at 4°C for up to one week.
<b>Tag Info</b>	N-terminal 10xHis-tagged and C-terminal Myc-tagged
<b>Mol. Weight</b>	36.5 kDa
<b>Protein Length</b>	Full Length of Mature Protein

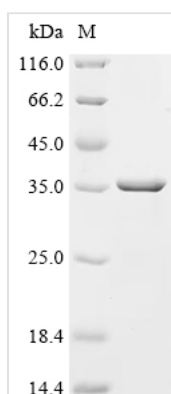
## Image



Based on the SEQUEST from database of E.coli host and target protein, the LC-MS/MS Analysis result of CSB-EP892322HU could indicate that this peptide derived from E.coli-expressed Homo sapiens (Human) METRN.



Based on the SEQUEST from database of E.coli host and target protein, the LC-MS/MS Analysis result of CSB-EP892322HU could indicate that this peptide derived from E.coli-expressed Homo sapiens (Human) METRN.



(Tris-Glycine gel) Discontinuous SDS-PAGE (reduced) with 5% enrichment gel and 15% separation gel.

## Shelf Life

The shelf life is related to many factors, storage state, buffer ingredients, storage temperature and the stability of the protein itself.

Generally, the shelf life of liquid form is 6 months at -20°C/-80°C. The shelf life of lyophilized form is 12 months at -20°C/-80°C.