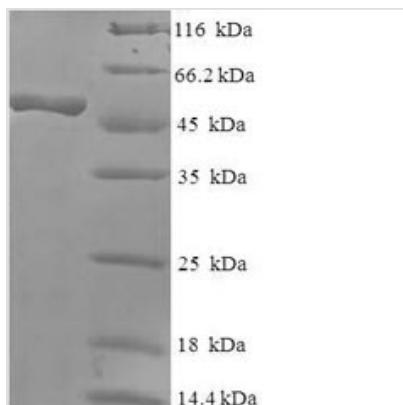




Recombinant Human Rab effector Noc2 (RPH3AL)

Product Code	CSB-EP891975HU
Relevance	Rab GTPase effector involved in the late steps of regulated exocytosis, both in endocrine and exocrine cells . Acts as a potential RAB3B effector protein in epithelial cells.1 Publication
Abbreviation	Recombinant Human RPH3AL protein
Storage	The shelf life is related to many factors, storage state, buffer ingredients, storage temperature and the stability of the protein itself. Generally, the shelf life of liquid form is 6 months at -20°C/-80°C. The shelf life of lyophilized form is 12 months at -20°C/-80°C.
Uniprot No.	Q9UNE2
Alias	No C2 domains proteinRabphilin-3A-like protein
Product Type	Recombinant Protein
Immunogen Species	Homo sapiens (Human)
Purity	Greater than 90% as determined by SDS-PAGE.
Sequence	MADTIFGSGNDQWVCPNDRQLALRAKLQTGWSVHTYQTEKQRRKQHLSPA VEAILQVIQRAERLDVLEQQRIGRLVERLETMRRNVMGNLSQCLLCGEVLGF LGSSSVFCKDCRKKVCTKCGIEASPGQKRPLWLCKICSEQREVWKRSGAWFY KGLPKYILPLKTPGRADDPHFRPLPTEPAEREPSSSETSRIYTWARGRVVSSD SDSDSDLSSSSLEDRLPSTGVRDRKGDKPWKESGGSV EAPRMGFTHPPGHL SGCQSSLASGETGTGSADPPGGPRPGLTRRAPVKDTPGRAPAADAAPAGPS SCLG
Research Area	Cell Cycle
Source	E.coli
Target Names	RPH3AL
Expression Region	1-315aa
Notes	Repeated freezing and thawing is not recommended. Store working aliquots at 4°C for up to one week.
Tag Info	N-terminal 6xHis-SUMO-tagged
Mol. Weight	50.5kDa
Protein Length	Full Length
Image	



(Tris-Glycine gel) Discontinuous SDS-PAGE (reduced) with 5% enrichment gel and 15% separation gel.

Reconstitution

We recommend that this vial be briefly centrifuged prior to opening to bring the contents to the bottom. Please reconstitute protein in deionized sterile water to a concentration of 0.1-1.0 mg/mL. We recommend to add 5-50% of glycerol (final concentration) and aliquot for long-term storage at -20°C/-80°C. Our default final concentration of glycerol is 50%. Customers could use it as reference.

Shelf Life

The shelf life is related to many factors, storage state, buffer ingredients, storage temperature and the stability of the protein itself. Generally, the shelf life of liquid form is 6 months at -20°C/-80°C. The shelf life of lyophilized form is 12 months at -20°C/-80°C.