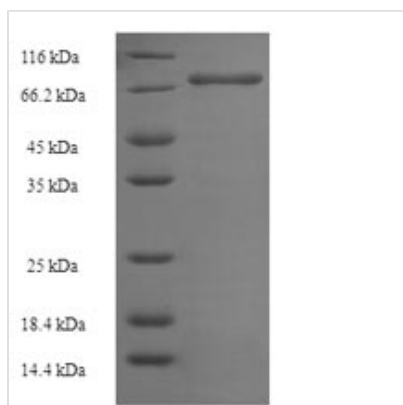




Recombinant Human Notchless protein homolog 1 (NLE1)

Product Code	CSB-EP889125HU
Relevance	Plays a role in regulating Notch activity. Plays a role in regulating the expression of CDKN1A and several mbers of the Wnt pathway, probably via its effects on Notch activity. Required during bryogenesis for inner mass cell survival .
Abbreviation	Recombinant Human NLE1 protein
Storage	The shelf life is related to many factors, storage state, buffer ingredients, storage temperature and the stability of the protein itself. Generally, the shelf life of liquid form is 6 months at -20°C/-80°C. The shelf life of lyophilized form is 12 months at -20°C/-80°C.
Uniprot No.	Q9NVX2
Product Type	Recombinant Protein
Immunogen Species	Homo sapiens (Human)
Purity	Greater than 90% as determined by SDS-PAGE.
Sequence	AAAVPDEAVARDVQRLLVQFQDEGGQLLGSPFDVPVDITPDRLQLVCNALLAQ EDPLPLAFFVHDAEIVSSLGKTLESQAVETEKVLDIIYQPQAIFRVRAVTRCTSS LEGHSEAVISVAFSPTGKYLASGSGDTTVRFWDLSTETPHFTCKGHRHWVLSI SWSPDGRKLASGCKNGQILLWDPSTGKQVGRTLGHGSKWITGLSWEPLHAN PECRYVASSSKDGSVRIWDTTAGRCERILTGHTQSVTCLRWGGDGLLYSASQ DRTIKVWRAHDGVLCRTLQGHGHWVNTMALSTDYALRTGAFEPAEASVNPQ DLQGSLQELKERALSRYNLVRGQGPERLVSGSDDFTLFLWSPAEDKKPLTRM TGHQALINQVLFSPDSRIVASASFDKSIKLWDGRTGKYLASLRGHVAAVYQIAW SADSRLLVSGSSDSTLKVWDVKAQKLAMDLPGHADDEVYAVDWSPDGQRVAS GGKDKCLRIWRR
Research Area	Biochemicals
Source	E.coli
Target Names	NLE1
Expression Region	2-485aa
Notes	Repeated freezing and thawing is not recommended. Store working aliquots at 4°C for up to one week.
Tag Info	N-terminal 6xHis-SUMO-tagged
Mol. Weight	69.2kDa
Protein Length	Full Length of Mature Protein
Image	



(Tris-Glycine gel) Discontinuous SDS-PAGE (reduced) with 5% enrichment gel and 15% separation gel.

Reconstitution

We recommend that this vial be briefly centrifuged prior to opening to bring the contents to the bottom. Please reconstitute protein in deionized sterile water to a concentration of 0.1-1.0 mg/mL. We recommend to add 5-50% of glycerol (final concentration) and aliquot for long-term storage at -20°C/-80°C. Our default final concentration of glycerol is 50%. Customers could use it as reference.

Shelf Life

The shelf life is related to many factors, storage state, buffer ingredients, storage temperature and the stability of the protein itself. Generally, the shelf life of liquid form is 6 months at -20°C/-80°C. The shelf life of lyophilized form is 12 months at -20°C/-80°C.