

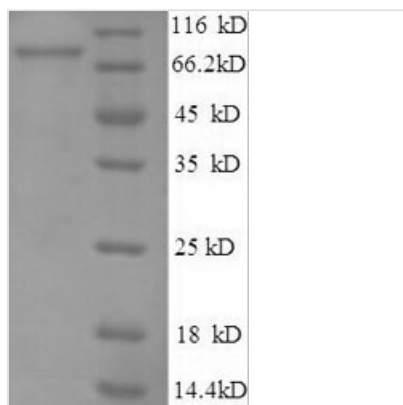


Recombinant Human E3 ubiquitin-protein ligase RAD18 (RAD18)

Product Code	CSB-EP889102HU
Relevance	E3 ubiquitin-protein ligase involved in postreplication repair of UV-damaged DNA. Postreplication repair functions in gap-filling of a daughter strand on replication of damaged DNA. Associates to the E2 ubiquitin conjugating enzyme UBE2B to form the UBE2B-RAD18 ubiquitin ligase complex involved in mono-ubiquitination of DNA-associated PCNA on 'Lys-164'. Has ssDNA binding activity.
Abbreviation	Recombinant Human RAD18 protein
Storage	The shelf life is related to many factors, storage state, buffer ingredients, storage temperature and the stability of the protein itself. Generally, the shelf life of liquid form is 6 months at -20°C/-80°C. The shelf life of lyophilized form is 12 months at -20°C/-80°C.
Uniprot No.	Q9NS91
Alias	Postreplication repair protein RAD18 ;hHR18 ;hRAD18RING finger protein 73
Product Type	Recombinant Protein
Immunogen Species	Homo sapiens (Human)
Purity	Greater than 90% as determined by SDS-PAGE.
Sequence	<p> MDSLAESRWPPGLAVMKTIDDLLRCGICFEYFNIAIMIIPQCSHNYCSLCIRKFLS YKTQCPTCCVTVTEPDLKNNRILDELVKSLNFARNHLLQFALESPAKSPASSSS KNLAVKVYTPVASRQSLKQGSRLMDNFLIREMSGSTSELLIKENKSKFSPQKE ASPAAKTKETRSVEEIAPDPSEAKRPEPPSTSTLKQVTKVDCPVCVGNIPESHI NKHLDSCLSREEKKESLRSSVHKKRPLPKTVYNLLSDRDLLKKLKEHGLSIQG NKQQLIKRHQEFVHMYNAQCDALHPKSAAEIVREIENIEKTRMRLEASKLNESV MVFTKDQTEKEIDEIHSKYRKKHKSEFQLLVDQARKGYKKIAGMSQKTVTITKE DESTKLSSVCMGQEDNMTSVTNHFSQSKLDSPEELEPDREEDSSSCIDIQEV LSSSESDSCNSSSSDIIRDLLLEEEEAWEASHKNDLQDTEISPRQNRRTAAES AEIEPRNKRNRN </p>
Research Area	Epigenetics and Nuclear Signaling
Source	E.coli
Target Names	RAD18
Expression Region	1-495aa
Notes	Repeated freezing and thawing is not recommended. Store working aliquots at 4°C for up to one week.
Tag Info	N-terminal 6xHis-SUMO-tagged
Mol. Weight	72.2kDa
Protein Length	Full Length



Image



(Tris-Glycine gel) Discontinuous SDS-PAGE (reduced) with 5% enrichment gel and 15% separation gel.

Reconstitution

We recommend that this vial be briefly centrifuged prior to opening to bring the contents to the bottom. Please reconstitute protein in deionized sterile water to a concentration of 0.1-1.0 mg/mL. We recommend to add 5-50% of glycerol (final concentration) and aliquot for long-term storage at -20°C/-80°C. Our default final concentration of glycerol is 50%. Customers could use it as reference.

Shelf Life

The shelf life is related to many factors, storage state, buffer ingredients, storage temperature and the stability of the protein itself. Generally, the shelf life of liquid form is 6 months at -20°C/-80°C. The shelf life of lyophilized form is 12 months at -20°C/-80°C.