

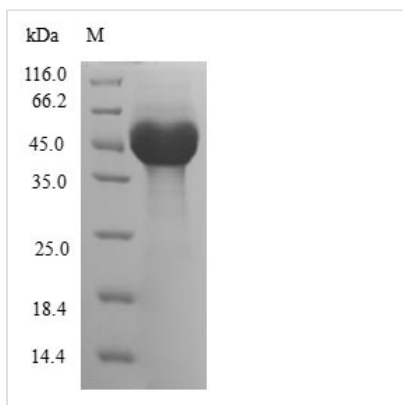


Recombinant Human ADP-ribosylation factor-like protein 6 (ARL6)

Product Code	CSB-EP887945HU
Relevance	Involved in membrane protein trafficking at the base of the ciliary organelle. Mediates recruitment onto plasma membrane of the BBSome complex which would constitute a coat complex required for sorting of specific membrane proteins to the primary cilia. Together with BBS1, is necessary for correct trafficking of PKD1 to primary cilia. Together with the BBSome complex and LTZL1, controls SMO ciliary trafficking and contributes to the sonic hedgehog (SHH) pathway regulation. May regulate cilia assembly and disassembly and subsequent ciliary signaling events such as the Wnt signaling cascade. Isoform 2 may be required for proper retinal function and organization
Abbreviation	Recombinant Human ARL6 protein
Storage	The shelf life is related to many factors, storage state, buffer ingredients, storage temperature and the stability of the protein itself. Generally, the shelf life of liquid form is 6 months at -20°C/-80°C. The shelf life of lyophilized form is 12 months at -20°C/-80°C.
Uniprot No.	Q9H0F7
Alias	Bardet-Biedl syndrome 3 protein
Product Type	Recombinant Protein
Immunogen Species	Homo sapiens (Human)
Purity	Greater than 90% as determined by SDS-PAGE.
Sequence	GLLDRLSVLLGLKKKEVHVLCLGLDMSGKTTIINKLKPSNAQSQNILPTIGFSIEK FKSSSLSTFTVFDMSGQGGRYRNLWEHYKQAIIFVIDSSDRLRMVVAKEELD TLLNHPDIKHRRIPILFFANKMDLRDAVTSVKVSQLLCLENIKDKPWHICASDAIK GEGLEQEGVDWLQDQIQTVKT
Research Area	Signal Transduction
Source	E.coli
Target Names	ARL6
Protein Names	Recommended name: ADP-ribosylation factor-like protein 6 Alternative name(s): Bardet-Biedl syndrome 3 protein
Expression Region	1-186aa
Notes	Repeated freezing and thawing is not recommended. Store working aliquots at 4°C for up to one week.
Tag Info	N-terminal GST-tagged
Mol. Weight	48.0kDa
Protein Length	Full Length



Image



(Tris-Glycine gel) Discontinuous SDS-PAGE (reduced) with 5% enrichment gel and 15% separation gel.

Reconstitution

We recommend that this vial be briefly centrifuged prior to opening to bring the contents to the bottom. Please reconstitute protein in deionized sterile water to a concentration of 0.1-1.0 mg/mL. We recommend to add 5-50% of glycerol (final concentration) and aliquot for long-term storage at -20°C/-80°C. Our default final concentration of glycerol is 50%. Customers could use it as reference.

Shelf Life

The shelf life is related to many factors, storage state, buffer ingredients, storage temperature and the stability of the protein itself. Generally, the shelf life of liquid form is 6 months at -20°C/-80°C. The shelf life of lyophilized form is 12 months at -20°C/-80°C.