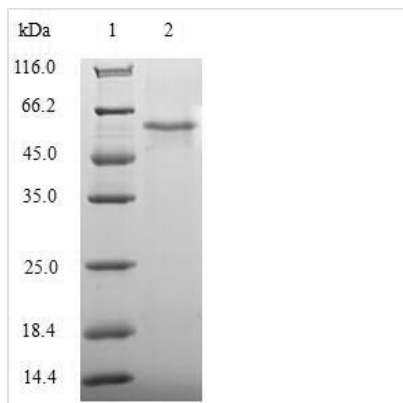




Recombinant Human Apoptosis facilitator Bcl-2-like protein 14 (BCL2L14)

Product Code	CSB-EP887178HU
Relevance	Plays a role in apoptosis.
Abbreviation	Recombinant Human BCL2L14 protein
Storage	The shelf life is related to many factors, storage state, buffer ingredients, storage temperature and the stability of the protein itself. Generally, the shelf life of liquid form is 6 months at -20°C/-80°C. The shelf life of lyophilized form is 12 months at -20°C/-80°C.
Uniprot No.	Q9BZR8
Alias	Apoptosis regulator Bcl-G
Product Type	Recombinant Protein
Immunogen Species	Homo sapiens (Human)
Purity	Greater than 90% as determined by SDS-PAGE.
Sequence	MCSTSGCDLEEIPLDDDDLNTIEFKILAYYTRHHVFKSTPALFSPKLLRTRSLSQ RGLGNCSANESWTEVSWPCRNQSSEKAINLGKKKSSWKAFFGVVEKEDSQ STPAKVSAQQGQRTLEYQDSHSQQWSRCLSNVEQCLEHEAVDPKVISIONRVA EIVYSWPPPQATQAGGFKSKEIFVTEGLSFQLQGHVPVASSSKKDEEEQILAKI VELLKYSGDQLERKLKKDKALMGHFQDGLSYSVFKTITDQVLMGVDPERGESE VKAQGFKAAALVIDVTAKLTAIDNHPMNRVLGFGTKYLNENFSPWIIQQHGGWEK ILGISHEEVD
Research Area	Cell Biology
Source	E.coli
Target Names	BCL2L14
Protein Names	Recommended name: Apoptosis facilitator Bcl-2-like protein 14 Short name= Bcl2-L-14 Alternative name(s): Apoptosis regulator Bcl-G
Expression Region	1-327aa
Notes	Repeated freezing and thawing is not recommended. Store working aliquots at 4°C for up to one week.
Tag Info	N-terminal GST-tagged
Mol. Weight	63.6kDa
Protein Length	Full Length
Image	



(Tris-Glycine gel) Discontinuous SDS-PAGE (reduced) with 5% enrichment gel and 15% separation gel.

Reconstitution

We recommend that this vial be briefly centrifuged prior to opening to bring the contents to the bottom. Please reconstitute protein in deionized sterile water to a concentration of 0.1-1.0 mg/mL. We recommend to add 5-50% of glycerol (final concentration) and aliquot for long-term storage at -20°C/-80°C. Our default final concentration of glycerol is 50%. Customers could use it as reference.

Shelf Life

The shelf life is related to many factors, storage state, buffer ingredients, storage temperature and the stability of the protein itself. Generally, the shelf life of liquid form is 6 months at -20°C/-80°C. The shelf life of lyophilized form is 12 months at -20°C/-80°C.