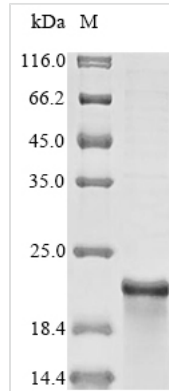




# Recombinant Human Microtubule-associated proteins 1A/1B light chain 3C (MAP1LC3C)

<b>Product Code</b>	CSB-EP887153HU
<b>Abbreviation</b>	Recombinant Human MAP1LC3C protein
<b>Storage</b>	The shelf life is related to many factors, storage state, buffer ingredients, storage temperature and the stability of the protein itself. Generally, the shelf life of liquid form is 6 months at -20°C/-80°C. The shelf life of lyophilized form is 12 months at -20°C/-80°C.
<b>Uniprot No.</b>	Q9BXW4
<b>Storage Buffer</b>	Tris-based buffer,50% glycerol
<b>Product Type</b>	Recombinant Proteins
<b>Immunogen Species</b>	Homo sapiens (Human)
<b>Purity</b>	Greater than 85% as determined by SDS-PAGE.
<b>Sequence</b>	MPPPQKIPSVRPFKQRKSLAIRQEEVAGIRAKFPNKIPVVVERYPRETFLPPLD KTKFLVPQELTMTQFLSIIRSRMVLRATEAFYLLVNNKSLVSMASATMAEIYRDYK DEDFVYMTYASQETFG
<b>Research Area</b>	Cancer
<b>Source</b>	E.coli
<b>Target Names</b>	MAP1LC3C
<b>Protein Names</b>	Recommended name: Microtubule-associated proteins 1A/1B light chain 3C Alternative name(s): Autophagy-related protein LC3 C Autophagy-related ubiquitin-like modifier LC3 C MAP1 light chain 3-like protein 3 MAP1A/MAP1B light chain 3 C
<b>Expression Region</b>	1-126aa
<b>Notes</b>	Repeated freezing and thawing is not recommended. Store working aliquots at 4°C for up to one week.
<b>Tag Info</b>	N-terminal 10xHis-tagged
<b>Mol. Weight</b>	20.7 kDa
<b>Protein Length</b>	Full Length of Mature Protein
<b>Image</b>	



(Tris-Glycine gel) Discontinuous SDS-PAGE (reduced) with 5% enrichment gel and 15% separation gel.

## Description

Amino acids 1-126 constitute the expression domain of recombinant Human MAP1LC3C. The calculated molecular weight for this MAP1LC3C protein is 20.7 kDa. The MAP1LC3C protein was expressed in e.coli. The N-terminal 10xHis tag was fused into the coding gene segment of MAP1LC3C, making it easier to detect and purify the MAP1LC3C recombinant protein in the later stages of expression and purification.

The human microtubule-associated protein 1A/1B light chain 3C (MAP1MAP1LC3C) is a member of the LC3 family and functions in the formation of autophagosomes, which are essential structures in autophagy, a cellular process responsible for degrading and recycling cellular components. MAP1LC3C undergoes lipidation, facilitating its association with autophagosomal membranes. Its involvement in autophagy allows for the targeted removal of damaged or obsolete cellular constituents. Research on MAP1LC3C focuses on understanding its precise role in autophagic processes, its regulation, and its implications in various physiological and pathological conditions, including neurodegenerative diseases and cancer.

## Shelf Life

The shelf life is related to many factors, storage state, buffer ingredients, storage temperature and the stability of the protein itself. Generally, the shelf life of liquid form is 6 months at -20°C/-80°C. The shelf life of lyophilized form is 12 months at -20°C/-80°C.