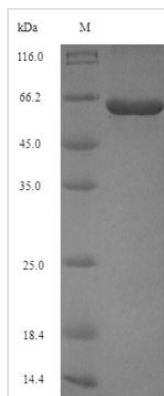




# Recombinant Porphyromonas gingivalis

## Peptidylarginine deiminase (PG\_1424)

<b>Product Code</b>	CSB-EP886515EYA
<b>Relevance</b>	Deiminates the guanidino group of C-terminal arginine residues on a variety of peptides, including the vasoregulatory peptide-hormone bradykinin, to yield ammonia and a citrulline residue. May promote the growth of the pathogen in the periodontal pocket by producing ammonia, ammonia having a protective effect during acidic cleaning cycles in the mouth.
<b>Abbreviation</b>	Recombinant Porphyromonas gingivalis Peptidylarginine deiminase protein
<b>Storage</b>	The shelf life is related to many factors, storage state, buffer ingredients, storage temperature and the stability of the protein itself. Generally, the shelf life of liquid form is 6 months at -20°C/-80°C. The shelf life of lyophilized form is 12 months at -20°C/-80°C.
<b>Uniprot No.</b>	Q9RQJ2
<b>Product Type</b>	Recombinant Protein
<b>Immunogen Species</b>	Porphyromonas gingivalis (strain ATCC BAA-308 / W83)
<b>Purity</b>	Greater than 90% as determined by SDS-PAGE.
<b>Sequence</b>	AFQETNPPAGPVRAIAEYERSAAVLVRYPPFGIPMELIKELAKNDKVITIVASESQ KNTVITQYTQSGVNLSNCDFFIAKTDSYWTRDYGWFAMYDTNKVGLVDFIYN RPRPNDDEFPKYEAQYLGIEFMFGMKLKQTGGNYMTDGYGSAVQSHIAYTENS SLSQAQVNQKMKDYLGITHHDVVQDPNGEYINHVDCWGKYLAPNKILIRKVPD NHPQHQALEDMAAYFAAQTCAWGTKYEVYRALATNEQPYTNSLILNNRVFVP VNGPASVDNDALNVYKTAMPGYEIIGVKGASGTPWLGTDALHCRTHEVADKG YLYIKHYPIELGEQAGPDYKIEADVSCANATISPVQCYRINGSFKAADMTM ESTGHYTYSFTGLNKNDKVEYYISAADNSGRKETYPFIGEPDPFKFTCMNETN TCTVTGAALKALRAWFNAGRSELAHSVSLNIAGTYRIKLYNTAGEEVAAMTKELV AGTSVFSMDVYSQAPGTYVLVVEGNGIRETMKILK
<b>Research Area</b>	Others
<b>Source</b>	E.coli
<b>Target Names</b>	PG_1424
<b>Expression Region</b>	44-556aa
<b>Notes</b>	Repeated freezing and thawing is not recommended. Store working aliquots at 4°C for up to one week.
<b>Tag Info</b>	N-terminal 6xHis-tagged
<b>Mol. Weight</b>	60.9kDa
<b>Protein Length</b>	Full Length of Mature Protein
<b>Image</b>	



(Tris-Glycine gel) Discontinuous SDS-PAGE (reduced) with 5% enrichment gel and 15% separation gel.

### Reconstitution

We recommend that this vial be briefly centrifuged prior to opening to bring the contents to the bottom. Please reconstitute protein in deionized sterile water to a concentration of 0.1-1.0 mg/mL. We recommend to add 5-50% of glycerol (final concentration) and aliquot for long-term storage at -20°C/-80°C. Our default final concentration of glycerol is 50%. Customers could use it as reference.

### Shelf Life

The shelf life is related to many factors, storage state, buffer ingredients, storage temperature and the stability of the protein itself. Generally, the shelf life of liquid form is 6 months at -20°C/-80°C. The shelf life of lyophilized form is 12 months at -20°C/-80°C.