



Recombinant Human Cytokine-inducible SH2-containing protein (CISH)

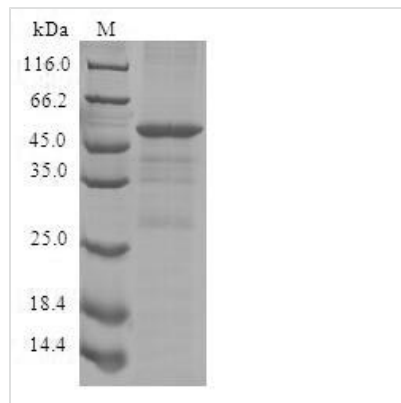
Product Code	CSB-EP885721HU
Relevance	SOCS family proteins form part of a classical negative feedback system that regulates cytokine signal transduction. CIS is involved in the negative regulation of cytokines that signal through the JAK-STAT5 pathway such as erythropoietin, prolactin and interleukin 3 (IL3) receptor. Inhibits STAT5 trans-activation by suppressing its tyrosine phosphorylation. May be a substrate-recognition component of a SCF-like ECS (Elongin BC-CUL2/5-SOCS-box protein) E3 ubiquitin-protein ligase complex which mediates the ubiquitination and subsequent proteasomal degradation of target proteins
Abbreviation	Recombinant Human CISH protein
Storage	The shelf life is related to many factors, storage state, buffer ingredients, storage temperature and the stability of the protein itself. Generally, the shelf life of liquid form is 6 months at -20°C/-80°C. The shelf life of lyophilized form is 12 months at -20°C/-80°C.
Uniprot No.	Q9NSE2
Alias	CIS-1 Protein G18 Suppressor of cytokine signaling
Product Type	Recombinant Protein
Immunogen Species	Homo sapiens (Human)
Purity	Greater than 90% as determined by SDS-PAGE.
Sequence	MVLCVQGPRPLLAVERTGQRPLWAPSLELPKPVMPQPLPAGAFLEEVAEGTPA QTESEPKVLDPEEDLLCIAKTFSYLRESGWYWGSITASEARQHLQKMPEGTF VRDSTHPSYLF TLSVKTTTRGPTNVRIEYADSSFR LDSNCLSRPRILAFPDVVS L VQHYVASCTADTRSDSPDPAPTPALPMPKEDAPSDPALPAPPPATAVHLKLVQ PFVRRSSARSLQHLCLRLVINRLVADVDCLPLPRRMADYLRQYPFQL
Research Area	Signal Transduction
Source	E.coli
Target Names	CISH
Protein Names	Recommended name: Cytokine-inducible SH2-containing protein Short name= CIS Alternative name(s): CIS-1 Protein G18 Suppressor of cytokine signaling Short name= SOCS
Expression Region	1-258aa
Notes	Repeated freezing and thawing is not recommended. Store working aliquots at 4°C for up to one week.
Tag Info	N-terminal GST-tagged
Mol. Weight	55.7kDa



Protein Length

Full Length

Image



(Tris-Glycine gel) Discontinuous SDS-PAGE (reduced) with 5% enrichment gel and 15% separation gel.

Description

Dive into signal transduction research with our premium Recombinant Human CISH protein, a vital component involved in cytokine signaling pathways. The cytokine-inducible SH2-containing protein (CISH) serves as a negative regulator of cytokine signaling, making it an essential player in immune responses and cellular homeostasis.

This full-length Recombinant Human CISH protein is expressed in *E. coli* and encompasses the 1-258aa expression region. The N-terminal GST-tag enables efficient protein purification and detection, contributing to a dependable product for your research endeavors. Boasting a purity greater than 90% as determined by SDS-PAGE, our Recombinant Human CISH protein ensures reliability and consistency in your signal transduction research. Available in lyophilized powder form, this protein can be conveniently incorporated into various experimental setups.

Reconstitution

We recommend that this vial be briefly centrifuged prior to opening to bring the contents to the bottom. Please reconstitute protein in deionized sterile water to a concentration of 0.1-1.0 mg/mL. We recommend to add 5-50% of glycerol (final concentration) and aliquot for long-term storage at -20°C/-80°C. Our default final concentration of glycerol is 50%. Customers could use it as reference.

Shelf Life

The shelf life is related to many factors, storage state, buffer ingredients, storage temperature and the stability of the protein itself. Generally, the shelf life of liquid form is 6 months at -20°C/-80°C. The shelf life of lyophilized form is 12 months at -20°C/-80°C.