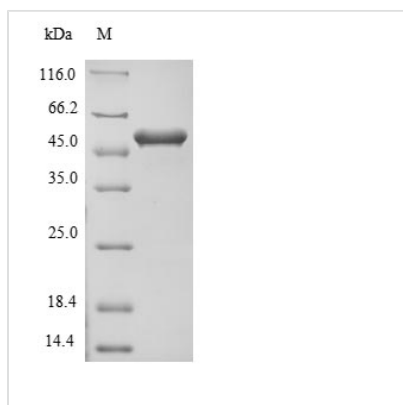




Recombinant Mouse Protein flightless-1 homolog (Flii), partial

Product Code	CSB-EP884922MO
Relevance	May play a role as coactivator in transcriptional activation by hormone-activated nuclear receptors (NR) and acts in cooperation with NCOA2 and CARM1. Involved in estrogen hormone signaling. Essential for early embryonic development. May play a role in regulation of cytoskeletal rearrangements involved in cytokinesis and cell migration, by inhibiting Rac1-dependent paxillin phosphorylation.
Abbreviation	Recombinant Mouse Flii protein, partial
Storage	The shelf life is related to many factors, storage state, buffer ingredients, storage temperature and the stability of the protein itself. Generally, the shelf life of liquid form is 6 months at -20°C/-80°C. The shelf life of lyophilized form is 12 months at -20°C/-80°C.
Uniprot No.	Q9JJ28
Product Type	Recombinant Protein
Immunogen Species	Mus musculus (Mouse)
Purity	Greater than 90% as determined by SDS-PAGE.
Sequence	VGQLPGLTIWQIENFVPVLVEEAFHGKFYEADCYIVLKTFLDDSGSLNWEIYYW IGGEATLDKKACSAIHAVNLRNYLGAECRTVREEMGDESEEFLLQVFDNDISYIE GGTASGFYTVEDTHYVTRMYRVYGKKNIKLEPVPLKGSSLDPRFVFLDQGLD IYVWRGAQATLSNTTKARLFAEKINKNERKGKAEITLLVQGQEPFPGFWDVLGG EPSEIKNHVPDDFWPPQPKLYKVGLGLGYLELPQINYKLSVEHKKRPKVELMP GMRLQSLLDTRCVYILDCWSDVFIWLGRKSPRLVRAAALKLGQELCGMLHRP RHTVVSRSLEGTE
Research Area	others
Source	E.coli
Target Names	Flii
Protein Names	Recommended name: Protein flightless-1 homolog
Expression Region	495-827aa
Notes	Repeated freezing and thawing is not recommended. Store working aliquots at 4°C for up to one week.
Tag Info	N-terminal 6xHis-B2M-tagged
Mol. Weight	52.0kDa
Protein Length	Partial
Image	



(Tris-Glycine gel) Discontinuous SDS-PAGE (reduced) with 5% enrichment gel and 15% separation gel.

Reconstitution

We recommend that this vial be briefly centrifuged prior to opening to bring the contents to the bottom. Please reconstitute protein in deionized sterile water to a concentration of 0.1-1.0 mg/mL. We recommend to add 5-50% of glycerol (final concentration) and aliquot for long-term storage at -20°C/-80°C. Our default final concentration of glycerol is 50%. Customers could use it as reference.

Shelf Life

The shelf life is related to many factors, storage state, buffer ingredients, storage temperature and the stability of the protein itself. Generally, the shelf life of liquid form is 6 months at -20°C/-80°C. The shelf life of lyophilized form is 12 months at -20°C/-80°C.