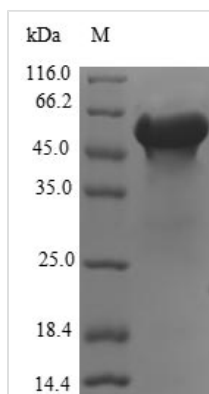




# Recombinant Human FK506-binding protein-like (FKBPL)

<b>Product Code</b>	CSB-EP883441HU
<b>Relevance</b>	May be involved in response to X-ray. Regulates p21 protein stability by binding to Hsp90 and p21.
<b>Abbreviation</b>	Recombinant Human FKBPL protein
<b>Storage</b>	The shelf life is related to many factors, storage state, buffer ingredients, storage temperature and the stability of the protein itself. Generally, the shelf life of liquid form is 6 months at -20°C/-80°C. The shelf life of lyophilized form is 12 months at -20°C/-80°C.
<b>Uniprot No.</b>	Q9UIM3
<b>Alias</b>	WAF-1/CIP1 stabilizing protein 39
<b>Product Type</b>	Recombinant Protein
<b>Immunogen Species</b>	Homo sapiens (Human)
<b>Purity</b>	Greater than 90% as determined by SDS-PAGE.
<b>Sequence</b>	METPPVNTIGEKDTSQPQQEWEKNLRENLDSVIQIRQQPRDPPTETLELEVSP DPASQILEHTQGAEKLVAELEGDSHKSHGSTSQMPEALQASDLWYCPDGSFV KKIVIRGHGLDKPKLGSCCRVLALGFPGSGPPEGWTELTMGVGPWREETWG ELIEKCLES MCQGEAE LQLPGHSGPPVRLTLASFTQGRDSWELETSEKEALA REERARGTELF RAGNPEGAARCYGRALRLLLTLPPP GPPERTVLHANLAACQL LLGQPQLAAQSCDRVLERE PGHLKALYRRGVAQAALGNLEKATADLKKVLAI D PKNRAAQEELGKVVIQGNQDAGLAQGLRKMFG
<b>Research Area</b>	Cell Biology
<b>Source</b>	E.coli
<b>Target Names</b>	FKBPL
<b>Protein Names</b>	Recommended name: FK506-binding protein-like Alternative name(s): WAF-1/CIP1 stabilizing protein 39 Short name= WISp39
<b>Expression Region</b>	1-349aa
<b>Notes</b>	Repeated freezing and thawing is not recommended. Store working aliquots at 4°C for up to one week.
<b>Tag Info</b>	N-terminal GST-tagged
<b>Mol. Weight</b>	65.2kDa
<b>Protein Length</b>	Full Length
<b>Image</b>	



(Tris-Glycine gel) Discontinuous SDS-PAGE (reduced) with 5% enrichment gel and 15% separation gel.

### Reconstitution

We recommend that this vial be briefly centrifuged prior to opening to bring the contents to the bottom. Please reconstitute protein in deionized sterile water to a concentration of 0.1-1.0 mg/mL. We recommend to add 5-50% of glycerol (final concentration) and aliquot for long-term storage at -20°C/-80°C. Our default final concentration of glycerol is 50%. Customers could use it as reference.

### Shelf Life

The shelf life is related to many factors, storage state, buffer ingredients, storage temperature and the stability of the protein itself. Generally, the shelf life of liquid form is 6 months at -20°C/-80°C. The shelf life of lyophilized form is 12 months at -20°C/-80°C.