

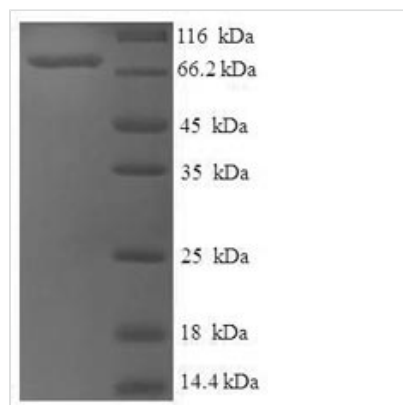


Recombinant Human Set1/Ash2 histone methyltransferase complex subunit ASH2 (ASH2L)

Product Code	CSB-EP883363HU
Relevance	Component of the Set1/Ash2 histone methyltransferase (HMT) complex, a complex that specifically methylates 'Lys-4' of histone H3, but not if the neighboring 'Lys-9' residue is already methylated. As part of the MLL1/MLL complex it is involved in methylation and dimethylation at 'Lys-4' of histone H3. May function as a transcriptional regulator. May play a role in hematopoiesis.
Abbreviation	Recombinant Human ASH2L protein
Storage	The shelf life is related to many factors, storage state, buffer ingredients, storage temperature and the stability of the protein itself. Generally, the shelf life of liquid form is 6 months at -20°C/-80°C. The shelf life of lyophilized form is 12 months at -20°C/-80°C.
Uniprot No.	Q9UBL3
Alias	ASH2-like protein
Product Type	Recombinant Protein
Immunogen Species	Homo sapiens (Human)
Purity	Greater than 90% as determined by SDS-PAGE.
Sequence	MDTQAGSVDEENGRQLGEVELQCGICTKWFTADTFGIDTSSCLPFMTNYSFH CNVCHHSGNTYFLRKQANLKEMCLSALANLTWQSRTQDEHPKTMFSKDKDIIP FIDKYWECMTTRQRP GKMTWPNNIVKTM SKERDVFLVKEHPDPGSKDPEEDY PKFGLLDQDLSNIGPAYDNQKQSSAVSTSGNLNGGIAAGSSGKGRGAKRKQQ DGGTTGTTKKARSDPLFSAQRLPPHGYPLEHPFNKDG YRYLAEPDPHAPDPE KLELDCWAGKPIPGDL YRACL YERVLLALH DRAPQLKISDDR LTVVGEKGYSM VRASHGVRKGAWYFEITVDEMP PDTAARLGWSQPLGNLQA PLGYDKFSYSW RSKKGTKFHQSIGKHYSSGYGQGDVLGFYINLPEDTETAKSLPDTYKDKALIKF KSYLYFEEKDFVDKAEKSLKQTPHSEIIFYKNGV NQGVAYKDIFEGVYFPAISLY KSCTVSINFGPCFKYPPKDLTYRPMSDMGWGA VVEHTLADVLYHVETEVDGR RSPPWEP
Research Area	Transcription
Source	E.coli
Target Names	ASH2L
Expression Region	1-534aa
Notes	Repeated freezing and thawing is not recommended. Store working aliquots at 4°C for up to one week.
Tag Info	N-terminal 6xHis-SUMO-tagged
Mol. Weight	76.2kDa
Protein Length	Full Length of Isoform 3



Image



(Tris-Glycine gel) Discontinuous SDS-PAGE (reduced) with 5% enrichment gel and 15% separation gel.

Description

The recombinant Human ASH2L protein expression in e.coli cells requires the insertion of a DNA fragment encoding the Human ASH2L protein (1-534aa) into a plasmid vector and the transferral of this vector into e.coli cells. The positive cells are screened, cultured, and then induced to express the ASH2L protein. The protein carries a N-terminal 6xHis-SUMO tag. The cells are lysed to harvest the recombinant Human ASH2L protein, which is purified through affinity purification and then detected by SDS-PAGE and subsequent staining of the gel with Coomassie Brilliant Blue. The purity of this recombinant Human ASH2L protein is over 90%.

Reconstitution

We recommend that this vial be briefly centrifuged prior to opening to bring the contents to the bottom. Please reconstitute protein in deionized sterile water to a concentration of 0.1-1.0 mg/mL. We recommend to add 5-50% of glycerol (final concentration) and aliquot for long-term storage at -20°C/-80°C. Our default final concentration of glycerol is 50%. Customers could use it as reference.

Shelf Life

The shelf life is related to many factors, storage state, buffer ingredients, storage temperature and the stability of the protein itself. Generally, the shelf life of liquid form is 6 months at -20°C/-80°C. The shelf life of lyophilized form is 12 months at -20°C/-80°C.