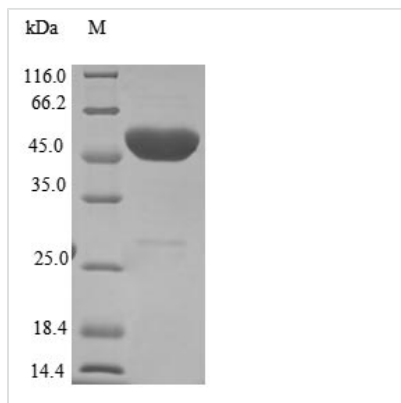


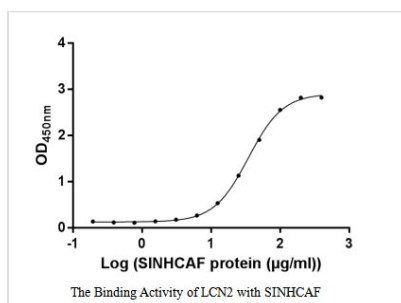


Recombinant Human SIN3-HDAC complex-associated factor (SINHCAF) (Active)

Product Code	CSB-EP882059HUe0
Relevance	""Complete sequencing and characterization of 21,243 full-length human cDNAs."" Ota T., Suzuki Y., Nishikawa T., Otsuki T., Sugiyama T., Irie R., Wakamatsu A., Hayashi K., Sato H., Nagai K., Kimura K., Makita H., Sekine M., Obayashi M., Nishi T., Shibahara T., Tanaka T., Ishii S. Sugano S. Nat. Genet. 36:40-45(2004)"
Abbreviation	Recombinant Human SINHCAF protein (Active)
Uniprot No.	Q9NP50
Storage Buffer	Tris-based buffer,50% glycerol
Product Type	Others
Immunogen Species	Homo sapiens (Human)
Biological Activity	Measured by its binding ability in a functional ELISA. Immobilized LCN2 at 2 µg/ml can bind human SINHCAF, the EC50 of human SINHCAF protein is 31.54-38.59 µg/ml.
Purity	Greater than 85% as determined by SDS-PAGE.
Sequence	MFGFHKPKMYRSIEGCCICRAKSSSSSRFTDSKRYEKDFQSCFGLHETRSGDIC NACVLLVKRWKKLPAGSKKNWNHVVDARAGPSLKTTLKPKVKTLSGNRIKS NQISKLQKEFKRHNSDAHSTTSSASPAQSPCYSNQSDDGSDTEMASGSNRTP VFSFLDLTYWKRQKICCGIYKGRFGEVLIDTHLFKPCCSNKKAAAEEKPEEQGP EPLPISTQEW
Research Area	Cancer
Source	E.coli
Target Names	SINHCAF
Expression Region	1-221aa
Notes	Repeated freezing and thawing is not recommended. Store working aliquots at 4°C for up to one week.
Tag Info	N-terminal GST-tagged
Mol. Weight	51.9 kDa
Protein Length	Full Length
Image	



(Tris-Glycine gel) Discontinuous SDS-PAGE (reduced) with 5% enrichment gel and 15% separation gel.



Activity

Measured by its binding ability in a functional ELISA. Immobilized LCN2 at 2 μg/ml can bind human SINHCAF, the EC_{50} of human SINHCAF protein is 31.54-38.59 μg/ml.

Shelf Life

The shelf life is related to many factors, storage state, buffer ingredients, storage temperature and the stability of the protein itself.

Generally, the shelf life of liquid form is 6 months at -20°C/-80°C. The shelf life of lyophilized form is 12 months at -20°C/-80°C.