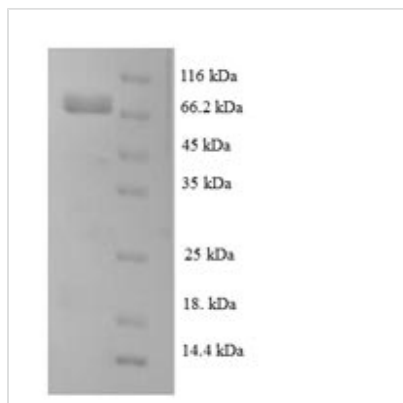




Recombinant Human Leucine-rich repeat-containing protein 40 (LRRC40)

Product Code	CSB-EP881002HU
Abbreviation	Recombinant Human LRRC40 protein
Storage	The shelf life is related to many factors, storage state, buffer ingredients, storage temperature and the stability of the protein itself. Generally, the shelf life of liquid form is 6 months at -20°C/-80°C. The shelf life of lyophilized form is 12 months at -20°C/-80°C.
Uniprot No.	Q9H9A6
Product Type	Recombinant Protein
Immunogen Species	Homo sapiens (Human)
Purity	Greater than 90% as determined by SDS-PAGE.
Sequence	MSRLKRIAGQDLRAGFKAGGRDCGTSVPQGGLLKAARKSGQLNLSGRNLSEVP QCVWRINVDIPEEANQNLSFGATERWWEQTDLTCLIISNNKLQSLTDDLRLPA LTVLDIHDNQLTSLPSAIRELENLQKLNVSHNKLKILPEEITNLRNLKCLYLQHNE LTCISEGFELQSLNLEDLDLSNNHLTTVPASFSSSLVRLNLSSNELKSLPAEIN RMKRLKHLD CNSNLETIPPELAGMESLELLYLRRNKLRLPEFPSCSLLKELH VGENQIEMLEAEHLKHLNSILVLDLRDNKLKSPDEIILLRSLERLDLSNNDISSL PYSLGNLHLKFLALEGNPLRTIRREIISKGTQEVLYLRSKIKDDGPSQSESATE TAMTLPSES RVNIHAIITLKILDYSDKQATLIPDEVF DAVKSNIVTSINFSKNQLCE IPKRMVELKEMVSDVDLSFNKLSFISLELCVLQKLTFLDLRNNFLNSLPEEMESL VRLQTINLSFNRFKMLPEVLYRIFTLETILISNNQVGSVDPQKMKMMENLTTLDL QNNDLLQIPPELGNCVNLRTLLLDGNPFRVPRAAILMKGTAAILEYLRDRIPT
Research Area	Cell Biology
Source	E.coli
Target Names	LRRC40
Expression Region	1-602aa
Notes	Repeated freezing and thawing is not recommended. Store working aliquots at 4°C for up to one week.
Tag Info	N-terminal 6xHis-tagged
Mol. Weight	72.2kDa
Protein Length	Full Length
Image	



(Tris-Glycine gel) Discontinuous SDS-PAGE (reduced) with 5% enrichment gel and 15% separation gel.

Reconstitution

We recommend that this vial be briefly centrifuged prior to opening to bring the contents to the bottom. Please reconstitute protein in deionized sterile water to a concentration of 0.1-1.0 mg/mL. We recommend to add 5-50% of glycerol (final concentration) and aliquot for long-term storage at -20°C/-80°C. Our default final concentration of glycerol is 50%. Customers could use it as reference.

Shelf Life

The shelf life is related to many factors, storage state, buffer ingredients, storage temperature and the stability of the protein itself. Generally, the shelf life of liquid form is 6 months at -20°C/-80°C. The shelf life of lyophilized form is 12 months at -20°C/-80°C.