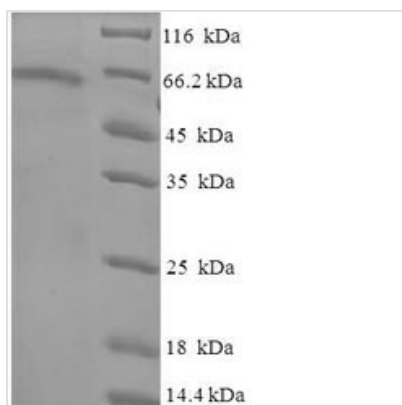




# Recombinant Human Tubulin beta-6 chain (TUBB6)

<b>Product Code</b>	CSB-EP880105HU
<b>Relevance</b>	Tubulin is the major constituent of microtubules. It binds two moles of GTP, one at an exchangeable site on the beta chain and one at a non-exchangeable site on the alpha chain .
<b>Abbreviation</b>	Recombinant Human TUBB6 protein
<b>Storage</b>	The shelf life is related to many factors, storage state, buffer ingredients, storage temperature and the stability of the protein itself. Generally, the shelf life of liquid form is 6 months at -20°C/-80°C. The shelf life of lyophilized form is 12 months at -20°C/-80°C.
<b>Uniprot No.</b>	Q9BUF5
<b>Alias</b>	Tubulin beta class V
<b>Product Type</b>	Recombinant Protein
<b>Immunogen Species</b>	Homo sapiens (Human)
<b>Purity</b>	Greater than 90% as determined by SDS-PAGE.
<b>Sequence</b>	MREIVHIQAGQCGNQIGTKFWEVISDEHGIDPAGGYVGDSALQLERINVYYNE SSSQKYVPRAALVDLEPGTMDSVRSGPFGQLFRPDNFIFGQTGAGNNWAKG HYTEGAELVDAVLDVVRKECEHCDCLQGFQLTHSLGGGTGSGMGTLISKIRE EFPDRIMNTFSVMPSPKVS DTVVEPYNATLSVHQLVENTDETYCIDNEALYDIC FRTLKLTPTYGDLNHLVSATMSGVTTSLRFPGQLNADLRKLAVNMVFPRLH FFMPGFAPLTSRGSQQYRALTVPELTQQMFDARNMMAACDPRHGRYLT VAT VFRGPMSMKEVDEQMLAIQSKNSSYFVEWIPNNVKVAVCDIPRGLKMASTFI GNSTAIQELFKRISEQFSAMFRRKAFLHWFTGEGMDEMEFTEAESNMNDLVS EYQQYQDATANDGEEAFEDEEEEIDG
<b>Research Area</b>	Signal Transduction
<b>Source</b>	E.coli
<b>Target Names</b>	TUBB6
<b>Expression Region</b>	1-446aa
<b>Notes</b>	Repeated freezing and thawing is not recommended. Store working aliquots at 4°C for up to one week.
<b>Tag Info</b>	N-terminal 6xHis-SUMO-tagged
<b>Mol. Weight</b>	65.9kDa
<b>Protein Length</b>	Full Length
<b>Image</b>	



(Tris-Glycine gel) Discontinuous SDS-PAGE (reduced) with 5% enrichment gel and 15% separation gel.

### Reconstitution

We recommend that this vial be briefly centrifuged prior to opening to bring the contents to the bottom. Please reconstitute protein in deionized sterile water to a concentration of 0.1-1.0 mg/mL. We recommend to add 5-50% of glycerol (final concentration) and aliquot for long-term storage at -20°C/-80°C. Our default final concentration of glycerol is 50%. Customers could use it as reference.

### Shelf Life

The shelf life is related to many factors, storage state, buffer ingredients, storage temperature and the stability of the protein itself. Generally, the shelf life of liquid form is 6 months at -20°C/-80°C. The shelf life of lyophilized form is 12 months at -20°C/-80°C.