



Recombinant Human Endophilin-B1 (SH3GLB1)

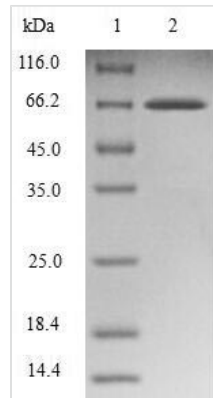
Product Code	CSB-EP878084HU
Relevance	May be required for normal outer mitochondrial membrane dynamics. Required for coatomer-mediated retrograde transport in certain cells. May recruit other proteins to membranes with high curvature. May promote membrane fusion . Involved in activation of caspase-dependent apoptosis by promoting BAX/BAK1 activation. Isoform 1 acts proapoptotic in fibroblasts . Involved in caspase-independent apoptosis during nutrition starvation and involved in the regulation of autophagy. Activates lipid kinase activity of PIK3C3 during autophagy probably by associating with the PI3K complex II (PI3KC3-C2)). Associated with PI3KC3-C2 during autophagy may regulate the trafficking of ATG9A from the Golgi complex to the peripheral cytoplasm for the formation of autophagosomes by inducing Golgi membrane tubulation and fragmentation . Involved in regulation of degradative endocytic trafficking and cytokinesis, probably in the context of PI3KC3-C2 . Isoform 2 acts antiapoptotic in neuronal cells; involved in maintenance of mitochondrial morphology and promotes neuronal viability
Abbreviation	Recombinant Human SH3GLB1 protein
Storage	The shelf life is related to many factors, storage state, buffer ingredients, storage temperature and the stability of the protein itself. Generally, the shelf life of liquid form is 6 months at -20°C/-80°C. The shelf life of lyophilized form is 12 months at -20°C/-80°C.
Uniprot No.	Q9Y371
Alias	Bax-interacting factor 1
Product Type	Recombinant Protein
Immunogen Species	Homo sapiens (Human)
Purity	Greater than 90% as determined by SDS-PAGE.
Sequence	MNIMDFNVKKLAADAGTFLSRAVQFTEEKLGQAECTELDAHLENLLSKAECTKI WTEKIMKQTEVLLQPNPNARIEEFVYEKLDRKAPSRINNPELLGQYMIDAGTEF GPGTAYGNALIKCGETQKRIGTADRELIQTSALNFLTPLRNFIEGDYKTIKERK LLQNKRLDLDAAKTRLKKAKAAETRNSSSEQELRITQSEFDRQAEITRLLLEGISS THAHLRCLNDFVEAQMTYYAQCYQYMLDLQKQLGSFSPSNYLSNNNQTSVTP VPSVLPNAIGSSAMASTSGLVITSPSNLSDLKECSGSRKARVLYDYDAANSTEL SLLADEVITVFSVVGMDSDWLMGERGNQKGKVPITYLELLN
Research Area	Cell Biology
Source	E.coli
Target Names	SH3GLB1
Expression Region	1-365aa
Notes	Repeated freezing and thawing is not recommended. Store working aliquots at 4°C for up to one week.
Tag Info	N-terminal GST-tagged



Mol. Weight 67.8kDa

Protein Length Full Length

Image



(Tris-Glycine gel) Discontinuous SDS-PAGE (reduced) with 5% enrichment gel and 15% separation gel.

Reconstitution

We recommend that this vial be briefly centrifuged prior to opening to bring the contents to the bottom. Please reconstitute protein in deionized sterile water to a concentration of 0.1-1.0 mg/mL. We recommend to add 5-50% of glycerol (final concentration) and aliquot for long-term storage at -20°C/-80°C. Our default final concentration of glycerol is 50%. Customers could use it as reference.

Shelf Life

The shelf life is related to many factors, storage state, buffer ingredients, storage temperature and the stability of the protein itself. Generally, the shelf life of liquid form is 6 months at -20°C/-80°C. The shelf life of lyophilized form is 12 months at -20°C/-80°C.