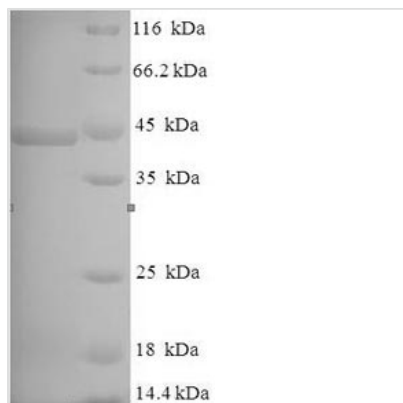


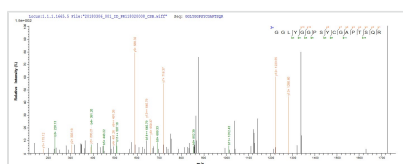


Recombinant *Pseudomonas aeruginosa* Lysyl endopeptidase (prpL)

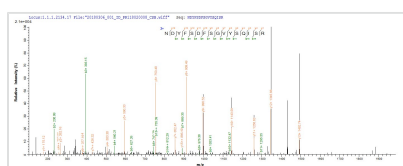
| | |
|--------------------------|---------------------------------------------------------------------------------------------------------------------------------------------------------------------------------------------------------------------------------------------------------------------------------|
| Product Code | CSB-EP875877EZ |
| Relevance | Lysine-specific endoprotease . Involved in corneal virulence. |
| Abbreviation | Recombinant <i>Pseudomonas aeruginosa</i> prpL protein |
| Storage | The shelf life is related to many factors, storage state, buffer ingredients, storage temperature and the stability of the protein itself. Generally, the shelf life of liquid form is 6 months at -20°C/-80°C. The shelf life of lyophilized form is 12 months at -20°C/-80°C. |
| Uniprot No. | Q9HWK6 |
| Alias | Protease IVPdS-regulated endoprotease |
| Product Type | Recombinant Protein |
| Immunogen Species | <i>Pseudomonas aeruginosa</i> (strain ATCC 15692 / PAO1 / 1C / PRS 101 / LMG 12228) |
| Purity | Greater than 90% as determined by SDS-PAGE. |
| Sequence | AGYRDGFGASGSCEVDAVCATQSGTRAYDNATAAVAKMVFTSSADGGSYICT GTLLNNGNSPKRQLFWSAAHCIEDQATAATLQTIWFYNTTQCYGDASTINQSV TVLTGGANILHRDAKRDTLLLELKRTTPAGVFYQGWSATPIANGSLGHDIHHPR GDAKKYSQGNVSAVGVTYDGHTALTRVDWPSAVVEGGSSGSGLLTVAGDGS YQLRGGLYGGPSYCGAPTSQRNDYFSDFSGVYSQISRYFAP |
| Research Area | Others |
| Source | E.coli |
| Target Names | prpL |
| Expression Region | 212-462aa |
| Notes | Repeated freezing and thawing is not recommended. Store working aliquots at 4°C for up to one week. |
| Tag Info | N-terminal 6xHis-SUMO-tagged |
| Mol. Weight | 42.4kDa |
| Protein Length | Full Length of Mature Protein |
| Image | |



(Tris-Glycine gel) Discontinuous SDS-PAGE (reduced) with 5% enrichment gel and 15% separation gel.



Based on the SEQUEST from database of E.coli host and target protein, the LC-MS/MS Analysis result of CSB-EP875877EZ could indicate that this peptide derived from E.coli-expressed *Pseudomonas aeruginosa* (strain ATCC 15692 / DSM 22644 / CIP 104116 / JCM 14847 / LMG 12228 / 1C / PRS 101 / PAO1) prpL.



Based on the SEQUEST from database of E.coli host and target protein, the LC-MS/MS Analysis result of CSB-EP875877EZ could indicate that this peptide derived from E.coli-expressed *Pseudomonas aeruginosa* (strain ATCC 15692 / DSM 22644 / CIP 104116 / JCM 14847 / LMG 12228 / 1C / PRS 101 / PAO1) prpL.

Reconstitution

We recommend that this vial be briefly centrifuged prior to opening to bring the contents to the bottom. Please reconstitute protein in deionized sterile water to a concentration of 0.1-1.0 mg/mL. We recommend to add 5-50% of glycerol (final concentration) and aliquot for long-term storage at -20°C/-80°C. Our default final concentration of glycerol is 50%. Customers could use it as reference.

Shelf Life

The shelf life is related to many factors, storage state, buffer ingredients, storage temperature and the stability of the protein itself. Generally, the shelf life of liquid form is 6 months at -20°C/-80°C. The shelf life of lyophilized form is 12 months at -20°C/-80°C.