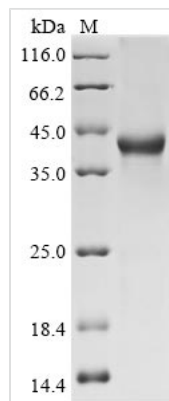




Recombinant Human SPARC-related modular calcium-binding protein 1 (SMOC1),Partial

Product Code	CSB-EP875673HU1
Abbreviation	Recombinant Human SMOC1 protein, partial
Storage	The shelf life is related to many factors, storage state, buffer ingredients, storage temperature and the stability of the protein itself. Generally, the shelf life of liquid form is 6 months at -20°C/-80°C. The shelf life of lyophilized form is 12 months at -20°C/-80°C.
Uniprot No.	Q9H4F8
Form	Liquid or Lyophilized powder
Storage Buffer	If the delivery form is liquid, the default storage buffer is Tris/PBS-based buffer, 5%-50% glycerol. If the delivery form is lyophilized powder, the buffer before lyophilization is Tris/PBS-based buffer, 6% Trehalose.
Product Type	Recombinant Protein
Immunogen Species	Homo sapiens (Human)
Purity	Greater than 90% as determined by SDS-PAGE.
Sequence	GRPLPGTSTRYVMPSCEDARAKTTEADDPFKDRELPGCPEGKKMEFITSLLD ALTTDMVQAINSAAPTGGGRFSEPDPSHTLEERVVHWYFSQLDSNSSNDINK R
Research Area	Developmental Biology
Source	E.coli
Target Names	SMOC1
Expression Region	277-382aa
Notes	Repeated freezing and thawing is not recommended. Store working aliquots at 4°C for up to one week.
Tag Info	N-terminal 6xHis-GST-tagged
Mol. Weight	43.2 kDa
Protein Length	Partial
Image	



(Tris-Glycine gel) Discontinuous SDS-PAGE (reduced) with 5% enrichment gel and 15% separation gel.

Description

The pipeline for the recombinant Human SMOC1 protein production in e.coli cells consists of the following consecutive steps: construction of the expression vector encoding the Human SMOC1 protein (277-382aa), its transformation into e.coli cells, high-density cultivation and induction of the positive cells, cell lysis, and expression analysis. The protein features a N-terminal 6xHis-GST tag fusion. The resulting recombinant Human SMOC1 protein is purified from the cell lysate through affinity purification, and its purity is greater than 90% determined by the SDS-PAGE.

Reconstitution

We recommend that this vial be briefly centrifuged prior to opening to bring the contents to the bottom. Please reconstitute protein in deionized sterile water to a concentration of 0.1-1.0 mg/mL. We recommend to add 5-50% of glycerol (final concentration) and aliquot for long-term storage at -20°C/-80°C. Our default final concentration of glycerol is 50%. Customers could use it as reference.

Shelf Life

The shelf life is related to many factors, storage state, buffer ingredients, storage temperature and the stability of the protein itself. Generally, the shelf life of liquid form is 6 months at -20°C/-80°C. The shelf life of lyophilized form is 12 months at -20°C/-80°C.