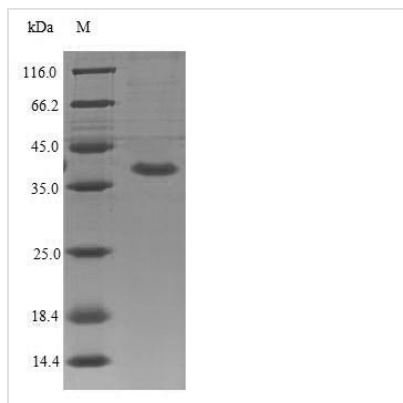




Recombinant Mouse Interleukin-1 receptor-like 2 (Il1rl2), partial

Product Code	CSB-EP875357MO
Relevance	Receptor for interleukin-36 (IL36A, IL36B and IL36G). After binding to interleukin-36 associates with the coreceptor IL1RAP to form the interleukin-36 receptor complex which mediates interleukin-36-dependent activation of NF-kappa-B, MAPK and other pathways. The IL-36 signaling system is thought to be present in epithelial barriers and to take part in local inflammatory response; it is similar to the IL-1 system. Seems to be involved in skin inflammatory response by induction of the IL-23/IL-17/IL-22 pathway.
Abbreviation	Recombinant Mouse Il1rl2 protein, partial
Storage	The shelf life is related to many factors, storage state, buffer ingredients, storage temperature and the stability of the protein itself. Generally, the shelf life of liquid form is 6 months at -20°C/-80°C. The shelf life of lyophilized form is 12 months at -20°C/-80°C.
Uniprot No.	Q9ERS7
Alias	IL-36 receptor Interleukin-1 receptor-related protein 2 Short name: IL-1Rrp2 Short name: IL1R-rp2
Product Type	Recombinant Protein
Immunogen Species	Mus musculus (Mouse)
Purity	Greater than 90% as determined by SDS-PAGE.
Sequence	DTCEDIFMHNVIISEGQPFNFCTYPPETNGAVNLTWYKTPSKSPVSNRHLR VHQDQQTWILFLPLTLEDSGIYQCVIRNAHNCYQIAVNLTVLKNHWCDSSMEGS PVNSPDVYQQILPIGKSGSLNCHLYFPESCALDSIKWYKGCEEIKAGKKYSPSG AKLLVNNVAVEDGGSYAC SARLTHLGRHFTIRNYIAVNTKEVEYGRRIPNITYP KNNSIEVPLGSTLIVNCNITDTKENTNLRCWRVNNTLVDDYYKDSKRIQEGIETN VSLRDQIRYTVNITFLKVKMEDYGRPFTCHAGVSAAYIILIYPVPDFR
Research Area	Immunology
Source	E.coli
Target Names	Il1rl2
Expression Region	22-338aa
Notes	Repeated freezing and thawing is not recommended. Store working aliquots at 4°C for up to one week.
Tag Info	N-terminal 6xHis-tagged
Mol. Weight	40.0kDa
Protein Length	Partial
Image	



(Tris-Glycine gel) Discontinuous SDS-PAGE (reduced) with 5% enrichment gel and 15% separation gel.

Reconstitution

We recommend that this vial be briefly centrifuged prior to opening to bring the contents to the bottom. Please reconstitute protein in deionized sterile water to a concentration of 0.1-1.0 mg/mL. We recommend to add 5-50% of glycerol (final concentration) and aliquot for long-term storage at -20°C/-80°C. Our default final concentration of glycerol is 50%. Customers could use it as reference.

Shelf Life

The shelf life is related to many factors, storage state, buffer ingredients, storage temperature and the stability of the protein itself. Generally, the shelf life of liquid form is 6 months at -20°C/-80°C. The shelf life of lyophilized form is 12 months at -20°C/-80°C.