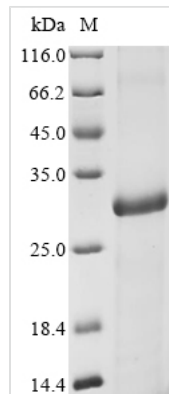




# Recombinant Arabidopsis thaliana Expansin-A1 (EXPA1)

Product Code	CSB-EP874889DOA
Abbreviation	Recombinant Mouse-ear cress EXPA1 protein
Storage	The shelf life is related to many factors, storage state, buffer ingredients, storage temperature and the stability of the protein itself. Generally, the shelf life of liquid form is 6 months at -20°C/-80°C. The shelf life of lyophilized form is 12 months at -20°C/-80°C.
Uniprot No.	Q9C554
Form	Liquid or Lyophilized powder
Storage Buffer	If the delivery form is liquid, the default storage buffer is Tris/PBS-based buffer, 5%-50% glycerol. If the delivery form is lyophilized powder, the buffer before lyophilization is Tris/PBS-based buffer, 6% Trehalose.
Product Type	Recombinant Protein
Immunogen Species	Arabidopsis thaliana (Mouse-ear cress)
Purity	Greater than 90% as determined by SDS-PAGE.
Sequence	HVNGYAGGGWVNAHATFYGGGDASGTMGGACGYGNLYSQGYGTNTAALST ALFNNGLSGACFEIRCQNDGKWCLPGSIVVTATNFCPPNNALPNNAGGWCN PPQQHFDLSQPVFQRIAQYRAGIVPVAYRRVPCVRRGGIRFTINGHSYFNLVLI TNVGGAGDVHSAMVKGSRTGWQAMSRNWGQNWQSN SYLNGQSLSFKVTT SDGQTIVSNNVANAGWSFGQTFTGAQLR
Research Area	Others
Source	E.coli
Target Names	EXPA1
Expression Region	18-250aa
Notes	Repeated freezing and thawing is not recommended. Store working aliquots at 4°C for up to one week.
Tag Info	N-terminal 10xHis-tagged and C-terminal Myc-tagged
Mol. Weight	32.2 kDa
Protein Length	Full Length of Mature Protein
Image	



(Tris-Glycine gel) Discontinuous SDS-PAGE (reduced) with 5% enrichment gel and 15% separation gel.

## Description

Recombinant *Arabidopsis thaliana* (Mouse-ear cress) EXPA1 protein expression is initiated by transfecting *e.coli* cells with a DNA expression vector containing the gene encoding the protein of interest (18-250aa). The subsequent culturing of the cells induces the expression of the desired protein. The protein is equipped with a N-terminal 10xHis tag and C-terminal Myc tag. The resulting recombinant *Arabidopsis thaliana* (Mouse-ear cress) EXPA1 protein is collected and purified from the cell lysate through affinity purification, demonstrating a purity greater than 90%, as indicated by SDS-PAGE.

## Reconstitution

We recommend that this vial be briefly centrifuged prior to opening to bring the contents to the bottom. Please reconstitute protein in deionized sterile water to a concentration of 0.1-1.0 mg/mL. We recommend to add 5-50% of glycerol (final concentration) and aliquot for long-term storage at -20°C/-80°C. Our default final concentration of glycerol is 50%. Customers could use it as reference.

## Shelf Life

The shelf life is related to many factors, storage state, buffer ingredients, storage temperature and the stability of the protein itself. Generally, the shelf life of liquid form is 6 months at -20°C/-80°C. The shelf life of lyophilized form is 12 months at -20°C/-80°C.