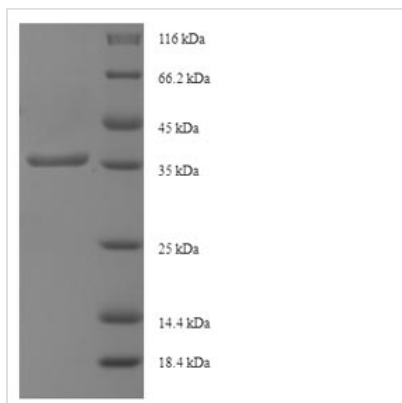




# Recombinant Human Intraflagellar transport protein 27 homolog (IFT27)

<b>Product Code</b>	CSB-EP874822HU
<b>Relevance</b>	Small GTPase-like component of the intraflagellar transport (IFT) complex B that promotes the exit of the BBSome complex from cilia via its interaction with ARL6 . Not involved in entry of the BBSome complex into cilium. Prevents aggregation of GTP-free ARL6 . Required for hedgehog signaling. Forms a subcomplex within the IFT complex B with IFT25 .
<b>Abbreviation</b>	Recombinant Human IFT27 protein
<b>Storage</b>	The shelf life is related to many factors, storage state, buffer ingredients, storage temperature and the stability of the protein itself. Generally, the shelf life of liquid form is 6 months at -20°C/-80°C. The shelf life of lyophilized form is 12 months at -20°C/-80°C.
<b>Uniprot No.</b>	Q9BW83
<b>Alias</b>	Putative GTP-binding protein RAY-likeRab-like protein 4
<b>Product Type</b>	Recombinant Protein
<b>Immunogen Species</b>	Homo sapiens (Human)
<b>Purity</b>	Greater than 90% as determined by SDS-PAGE.
<b>Sequence</b>	MVKLAAKCILAGDPAVGKTALAQIFRSDGAHFQKSYTLTTGMDLVVKTVPVDPD TGDSVELFIFDSAGKELFSEMLDKLWESPNVLCLVYDVTNEESFNNCSKWLEK ARSQAPGISLPGVLVGNKTDLAGRRAVDSEARAWALGQGLECFETSVKEME NFEAPFHCLAKQFHQLYREKVEVFRALA
<b>Research Area</b>	Signal Transduction
<b>Source</b>	E.coli
<b>Target Names</b>	IFT27
<b>Expression Region</b>	1-186aa
<b>Notes</b>	Repeated freezing and thawing is not recommended. Store working aliquots at 4°C for up to one week.
<b>Tag Info</b>	N-terminal 6xHis-SUMO-tagged
<b>Mol. Weight</b>	36.5kDa
<b>Protein Length</b>	Full Length
<b>Image</b>	



(Tris-Glycine gel) Discontinuous SDS-PAGE (reduced) with 5% enrichment gel and 15% separation gel.

## Reconstitution

We recommend that this vial be briefly centrifuged prior to opening to bring the contents to the bottom. Please reconstitute protein in deionized sterile water to a concentration of 0.1-1.0 mg/mL. We recommend to add 5-50% of glycerol (final concentration) and aliquot for long-term storage at -20°C/-80°C. Our default final concentration of glycerol is 50%. Customers could use it as reference.

## Shelf Life

The shelf life is related to many factors, storage state, buffer ingredients, storage temperature and the stability of the protein itself.

Generally, the shelf life of liquid form is 6 months at -20°C/-80°C. The shelf life of lyophilized form is 12 months at -20°C/-80°C.