



Recombinant Human Trichoplein keratin filament-binding protein (TCHP)

Product Code	CSB-EP874804HU
Relevance	Tumor suppressor which has the ability to inhibit cell growth and be pro-apoptotic during cell stress. Inhibits cell growth in bladder and prostate cancer cells by a down-regulation of HSPB1 by inhibiting its phosphorylation. May act as a 'capping' or 'branching' protein for keratin filaments in the cell periphery. May regulate K8/K18 filament and desmosome organization mainly at the apical or peripheral regions of simple epithelial cells.
Abbreviation	Recombinant Human TCHP protein
Storage	The shelf life is related to many factors, storage state, buffer ingredients, storage temperature and the stability of the protein itself. Generally, the shelf life of liquid form is 6 months at -20°C/-80°C. The shelf life of lyophilized form is 12 months at -20°C/-80°C.
Uniprot No.	Q9BT92
Alias	Mitochondrial protein with oncostatic activity ;Mitostatin;Tumor suppressor protein
Product Type	Recombinant Protein
Immunogen Species	Homo sapiens (Human)
Purity	Greater than 90% as determined by SDS-PAGE.
Sequence	MALPTLPSYWCSQQRLNQQRLARQREQEARLRQQWEQNSRYFRMSDICSSK QAEWSSKTSYQRSMHAYQREKMKEEKRRSLEARREKLRQLMQEEQDLLARE LEELRLSMNLQERRIREQHGKLKSAKEEQRKLI AEQLLYEHWKKNNPKLREME LDLHQKHVNSWEMQKEEKKQQEATAEQENKRYENEYERARREALERMKAE EERRQLEDKLQAEALLQQMEELKLKEVEATKLKKEQENLLKQRWELERLEEER KQMEAFRQKAELGRFLRHQYNAQLSRRTQQIQEELEADRRILQALLEKEDESQ RLHLARREQVMADVAVWMKQAIIEEQLQLERAREAEQLMLLREEAKEMWEKRE AEWARERSARDRLMSEVLTGRQQQIQEKIEQNRRAQEESLKHREQLIRNLEE VRELARREKEESEKLKSARKQELEAQVAERRLQAWQADQEEEEEEEEARRVE QLSDALLQQEAETMAEQGYRPKPYGHPKIAWN
Research Area	Cancer
Source	E.coli
Target Names	TCHP
Protein Names	Recommended name: Trichoplein keratin filament-binding protein Short name= Protein TCHP Alternative name(s): Mitochondrial protein with oncostatic activity Short name= Mitostatin Tumor suppressor protein
Expression Region	1-498aa
Notes	Repeated freezing and thawing is not recommended. Store working aliquots at 4°C for up to one week.

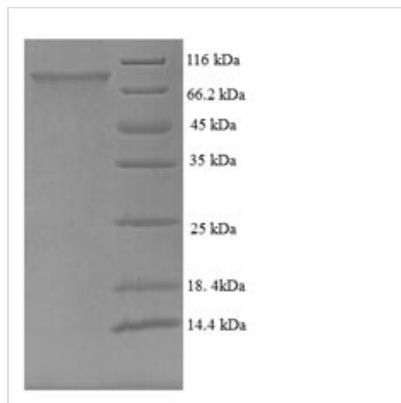


Tag Info N-terminal 6xHis-SUMO-tagged

Mol. Weight 77.1kDa

Protein Length Full Length

Image



(Tris-Glycine gel) Discontinuous SDS-PAGE (reduced) with 5% enrichment gel and 15% separation gel.

Reconstitution We recommend that this vial be briefly centrifuged prior to opening to bring the contents to the bottom. Please reconstitute protein in deionized sterile water to a concentration of 0.1-1.0 mg/mL. We recommend to add 5-50% of glycerol (final concentration) and aliquot for long-term storage at -20°C/-80°C. Our default final concentration of glycerol is 50%. Customers could use it as reference.

Shelf Life The shelf life is related to many factors, storage state, buffer ingredients, storage temperature and the stability of the protein itself. Generally, the shelf life of liquid form is 6 months at -20°C/-80°C. The shelf life of lyophilized form is 12 months at -20°C/-80°C.