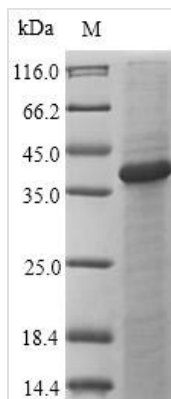




Recombinant Mouse C-type lectin domain family 4 member A (Clec4a), partial

Product Code	CSB-EP874136MO
Relevance	May be involved in regulating immune reactivity. May play a role in modulating dendritic cells (DC) differentiation and/or maturation. May be involved in the inhibition of B-cell-receptor-mediated calcium mobilization and protein tyrosine phosphorylation.
Abbreviation	Recombinant Mouse Clec4a protein, partial
Storage	The shelf life is related to many factors, storage state, buffer ingredients, storage temperature and the stability of the protein itself. Generally, the shelf life of liquid form is 6 months at -20°C/-80°C. The shelf life of lyophilized form is 12 months at -20°C/-80°C.
Uniprot No.	Q9QZ15
Alias	C-type lectin superfamily member 6 Dendritic cell immunoreceptor
Product Type	Recombinant Protein
Immunogen Species	Mus musculus (Mouse)
Purity	Greater than 90% as determined by SDS-PAGE.
Sequence	QKYSQLLEEKKAANKNIMHNELNCTKSVSPMEDKVVSCCPKDWRLFGSHCYLV PTVSSSASWNKSEENC SRMGAHLVVIQSQEEQDFITGILDTHAAYFIGLWDTG HRQWQWVDQTPYEE SITFWHNGEPSSGNEKCATIIYRWKTGWGWNDISCSL KQKSVCQMKKINL
Research Area	Immunology
Source	E.coli
Target Names	Clec4a
Expression Region	70-238aa
Notes	Repeated freezing and thawing is not recommended. Store working aliquots at 4°C for up to one week.
Tag Info	N-terminal 10xHis-SUMO-tagged and C-terminal Myc-tagged
Mol. Weight	39.6kDa
Protein Length	Extracellular Domain
Image	



(Tris-Glycine gel) Discontinuous SDS-PAGE (reduced) with 5% enrichment gel and 15% separation gel.

Description

The expression region of this recombinant Mouse Clec4a covers amino acids 70-238. The expected molecular weight for the Clec4a protein is calculated to be 39.6 kDa. This protein is generated in a e.coli-based system. The N-terminal 10xHis-SUMO tag and C-terminal Myc tag was fused into the coding gene segment of Clec4a, making it easier to detect and purify the Clec4a recombinant protein in the later stages of expression and purification.

Mouse C-type lectin domain family 4 member A (Clec4a) is a protein belonging to the C-type lectin domain family. Clec4a acts as a pattern recognition receptor (PRR) involved in the recognition of various pathogens, particularly fungi. It contains a C-type lectin domain that binds to carbohydrates on the surface of pathogens, initiating immune responses. Clec4a is primarily expressed in immune cells, such as dendritic cells and macrophages. Upon ligand binding, Clec4a activates signaling pathways that contribute to the immune response against invading microorganisms. The role of Clec4a in pathogen recognition makes it an essential component of the innate immune system, contributing to host defense against infections.

Reconstitution

We recommend that this vial be briefly centrifuged prior to opening to bring the contents to the bottom. Please reconstitute protein in deionized sterile water to a concentration of 0.1-1.0 mg/mL. We recommend to add 5-50% of glycerol (final concentration) and aliquot for long-term storage at -20°C/-80°C. Our default final concentration of glycerol is 50%. Customers could use it as reference.

Shelf Life

The shelf life is related to many factors, storage state, buffer ingredients, storage temperature and the stability of the protein itself. Generally, the shelf life of liquid form is 6 months at -20°C/-80°C. The shelf life of lyophilized form is 12 months at -20°C/-80°C.