

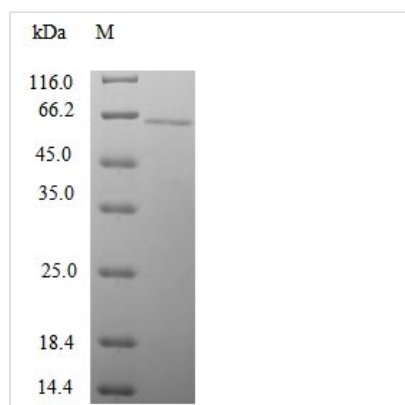


# Recombinant Human Gamma-1-syntrophin (SNTG1)

<b>Product Code</b>	CSB-EP873648HU
<b>Relevance</b>	Adapter protein that binds to and probably organizes the subcellular localization of a variety of proteins. May link various receptors to the actin cytoskeleton and the dystrophin glycoprotein complex. May participate in regulating the subcellular location of diacylglycerol kinase-zeta to ensure that diacylglycerol is rapidly inactivated following receptor activation.
<b>Abbreviation</b>	Recombinant Human SNTG1 protein
<b>Storage</b>	The shelf life is related to many factors, storage state, buffer ingredients, storage temperature and the stability of the protein itself. Generally, the shelf life of liquid form is 6 months at -20°C/-80°C. The shelf life of lyophilized form is 12 months at -20°C/-80°C.
<b>Uniprot No.</b>	Q9NSN8
<b>Alias</b>	Syntrophin-4
<b>Product Type</b>	Recombinant Protein
<b>Immunogen Species</b>	Homo sapiens (Human)
<b>Purity</b>	Greater than 90% as determined by SDS-PAGE.
<b>Sequence</b>	MDFRTACEETKTGICLLQDGNQEPFKVRLHLAKDILMIQEQDVICVSGEPFYSG ERTVTIRRQTVGGFGLSIKGGAEHNIPVVVSKISKEQRAELSGLLFIGDAILQING INVRKCRHEEVVQVLRNAGEEVTLTVSFLKRAPAFCLKPLNEDCACAPSDQSS GTSSPLCDSGLHLNYPNNTDTLSCSSWPTSPGLRWEKRWCDLRLIPLLHSR FSQYVPGTDLRQNAFQVIAVDGVCTGIIQCLSAEDCVDWLQAIATNISNLTKH NIKKINRNFVNNQIVYMGWCEAREQDPLQDRVYSPTFLALRGSCLYKFLAPP VTTWDWTRAEKTFVYEIMCKILKDSDLLDRRKQCFTVQSESGEDLYFSVELE SDLAQWERAFTATFLEVERIQCKTYACVLESHLMGLTIDFSTGFICFDAATKA VLWRYKFSQLKGSSDDGKSKIKFLFQNPDTKQIEAKELEFSNLFVAVLHCIHSFF AAKVACLDPLFLGNQATASTAASSATTSKAKYTT
<b>Source</b>	E.coli
<b>Target Names</b>	SNTG1
<b>Protein Names</b>	Recommended name: Gamma-1-syntrophin Short name= G1SYN Alternative name(s): Syntrophin-4 Short name= SYN4
<b>Expression Region</b>	1-517aa
<b>Notes</b>	Repeated freezing and thawing is not recommended. Store working aliquots at 4°C for up to one week.
<b>Tag Info</b>	N-terminal 10xHis-tagged and C-terminal Myc-tagged
<b>Mol. Weight</b>	63.0kDa
<b>Protein Length</b>	Full Length



## Image



(Tris-Glycine gel) Discontinuous SDS-PAGE (reduced) with 5% enrichment gel and 15% separation gel.

## Reconstitution

We recommend that this vial be briefly centrifuged prior to opening to bring the contents to the bottom. Please reconstitute protein in deionized sterile water to a concentration of 0.1-1.0 mg/mL. We recommend to add 5-50% of glycerol (final concentration) and aliquot for long-term storage at -20°C/-80°C. Our default final concentration of glycerol is 50%. Customers could use it as reference.

## Shelf Life

The shelf life is related to many factors, storage state, buffer ingredients, storage temperature and the stability of the protein itself. Generally, the shelf life of liquid form is 6 months at -20°C/-80°C. The shelf life of lyophilized form is 12 months at -20°C/-80°C.