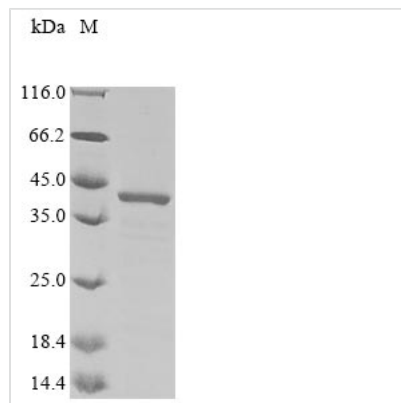




Recombinant Human Golgi phosphoprotein 3 (GOLPH3)

Product Code	CSB-EP872494HU
Abbreviation	Recombinant Human GOLPH3 protein
Storage	The shelf life is related to many factors, storage state, buffer ingredients, storage temperature and the stability of the protein itself. Generally, the shelf life of liquid form is 6 months at -20°C/-80°C. The shelf life of lyophilized form is 12 months at -20°C/-80°C.
Uniprot No.	Q9H4A6
Form	Liquid or Lyophilized powder
Storage Buffer	If the delivery form is liquid, the default storage buffer is Tris/PBS-based buffer, 5%-50% glycerol. If the delivery form is lyophilized powder, the buffer before lyophilization is Tris/PBS-based buffer, 6% Trehalose.
Product Type	Recombinant Protein
Immunogen Species	Homo sapiens (Human)
Purity	Greater than 85% as determined by SDS-PAGE.
Sequence	MTSLTQRSSGLVQRRTEASRNAADKERAAGGGAGSSEDDAQSRRDEQDDD DKGDSKETRLTLMEEVLLLGLKDREGYTSFWNDCISSGLRGCMLELALRGRL QLEACGMRRKSLLTRKVICKSDAPTGDVLLDEALKHVKETQPPETVQNWIELL SGETWNPLKLHYQLRNVRLAKNLVEKGVLTTEKQNFLLFDMTTHPLTNNNI KQRLIKKVQEAVLDDKWVNDPHRMDRLLALIYLAHASDVLENAPLLDEQYD LATKRVRQLLDLDPVEVECLKANTNEVLWAVVAAFTK
Research Area	Signal Transduction
Source	E.coli
Target Names	GOLPH3
Expression Region	1-298aa
Notes	Repeated freezing and thawing is not recommended. Store working aliquots at 4°C for up to one week.
Tag Info	N-terminal 6xHis-tagged
Mol. Weight	39.8 kDa
Protein Length	Full Length
Image	



(Tris-Glycine gel) Discontinuous SDS-PAGE (reduced) with 5% enrichment gel and 15% separation gel.

Description

In the production of the recombinant Human GOLPH3 protein in e.coli cells, a sequential pipeline involves constructing the expression vector coding for the Human GOLPH3 protein (1-298aa), transforming the recombinant vector into e.coli cells, selecting the positive cells and cultivating them, lysing cells, and characterizing the protein. The resulting recombinant Human GOLPH3 protein is purified from the cell lysate using affinity purification. Its purity exceeds 85%, as determined by SDS-PAGE.

Reconstitution

We recommend that this vial be briefly centrifuged prior to opening to bring the contents to the bottom. Please reconstitute protein in deionized sterile water to a concentration of 0.1-1.0 mg/mL. We recommend to add 5-50% of glycerol (final concentration) and aliquot for long-term storage at -20°C/-80°C. Our default final concentration of glycerol is 50%. Customers could use it as reference.

Shelf Life

The shelf life is related to many factors, storage state, buffer ingredients, storage temperature and the stability of the protein itself. Generally, the shelf life of liquid form is 6 months at -20°C/-80°C. The shelf life of lyophilized form is 12 months at -20°C/-80°C.