

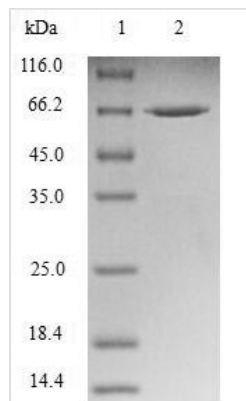


Recombinant Human Nuclear distribution protein nudE-like 1 (NDEL1)

Product Code	CSB-EP872414HU
Relevance	Required for organization of the cellular microtubule array and microtubule anchoring at the centrosome. May regulate microtubule organization at least in part by targeting the microtubule severing protein KATNA1 to the centrosome. Also positively regulates the activity of the minus-end directed microtubule motor protein dynein. May enhance dynein-mediated microtubule sliding by targeting dynein to the microtubule plus ends. Required for several dynein- and microtubule-dependent processes such as the maintenance of Golgi integrity, the centripetal motion of secretory vesicles and the coupling of the nucleus and centrosome. Also required during brain development for the migration of newly formed neurons from the ventricular/subventricular zone toward the cortical plate. Plays a role, together with DISC1, in the regulation of neurite outgrowth. Required for mitosis in some cell types but appears to be dispensable for mitosis in cortical neuronal progenitors, which instead requires NDE1. Facilitates the polymerization of neurofilaments from the individual subunits NEFH and NEFL.
Abbreviation	Recombinant Human NDEL1 protein
Storage	The shelf life is related to many factors, storage state, buffer ingredients, storage temperature and the stability of the protein itself. Generally, the shelf life of liquid form is 6 months at -20°C/-80°C. The shelf life of lyophilized form is 12 months at -20°C/-80°C.
Uniprot No.	Q9GZM8
Alias	Mitotin-associated protein 1
Product Type	Recombinant Protein
Immunogen Species	Homo sapiens (Human)
Purity	Greater than 90% as determined by SDS-PAGE.
Sequence	MDGEDIPDFSSLKEETAYWKELSLKYKQSFQEARDELVEFQEGSRELEAELEA QLVQAEQRNRDLQADNQRLKYEVEALKEKLEHQYAQSYKQVSVLEDDLSQTR AIKEQLHKYVRELEQANDDLERAKRATIVSLED FEQRLNQAIERNAFLESELDE KESLLVSVQRLKDEARDLRQELAVRERQQEVTRKSAPSSPTLDCEKMDSAVQ ASLSLPATPVGKGTEFTFPSPKAIPNGFGTSP LTPSARISALNIVGDLLRKVGAL ESKLAACRNFAKDQASRKSYSIGNVNCGV LNGNGTKFSRSGHTSFFDKGAVN GFD TAPPPPGLGSSRPSSAPGMLPLSV
Research Area	Neuroscience
Source	E.coli
Target Names	NDEL1
Protein Names	Recommended name: Nuclear distribution protein nudE-like 1 Short name= Protein NudelAlternative name(s): Mitotin-associated protein 1



Expression Region	1-345aa
Notes	Repeated freezing and thawing is not recommended. Store working aliquots at 4°C for up to one week.
Tag Info	N-terminal GST-tagged
Mol. Weight	65.4kDa
Protein Length	Full Length of BC026101

Image


(Tris-Glycine gel) Discontinuous SDS-PAGE (reduced) with 5% enrichment gel and 15% separation gel.

Reconstitution	We recommend that this vial be briefly centrifuged prior to opening to bring the contents to the bottom. Please reconstitute protein in deionized sterile water to a concentration of 0.1-1.0 mg/mL. We recommend to add 5-50% of glycerol (final concentration) and aliquot for long-term storage at -20°C/-80°C. Our default final concentration of glycerol is 50%. Customers could use it as reference.
Shelf Life	The shelf life is related to many factors, storage state, buffer ingredients, storage temperature and the stability of the protein itself. Generally, the shelf life of liquid form is 6 months at -20°C/-80°C. The shelf life of lyophilized form is 12 months at -20°C/-80°C.