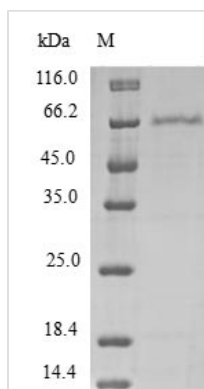




Recombinant Human Programmed cell death protein 2-like (PDCD2L)

Product Code	CSB-EP871560HU
Relevance	Over-expression suppresses AP1, CREB, NFAT, and NF-kB transcriptional activation, and delays cell cycle progression at S phase.
Abbreviation	Recombinant Human PDCD2L protein
Storage	The shelf life is related to many factors, storage state, buffer ingredients, storage temperature and the stability of the protein itself. Generally, the shelf life of liquid form is 6 months at -20°C/-80°C. The shelf life of lyophilized form is 12 months at -20°C/-80°C.
Uniprot No.	Q9BRP1
Product Type	Recombinant Protein
Immunogen Species	Homo sapiens (Human)
Purity	Greater than 90% as determined by SDS-PAGE.
Sequence	AAVLKPVLLGLRDAPVHGSP TGPGAWTASKLGGIPDALPTVAAPRPVCQRCG QPLALVVQVYCPLEGSPFHRLLHVFACACPGCSTGGARSWKVFRSQCLQVPE REAQDAQKQGNSLAAEDWCEGADDWGS DTEEGPSPQFTLDFGNDASSAKD VDWTARLQDLRLQDAVLGAAHPVPPGLPLFLPYICVADEDDYRDFVNLDHAH SLLRDYQQREGIAMDQLLSQSLPNDGDEKYEKTIKSGDQTFYKFMKRIAACQE QILRYSWSGEPLFLTCPTSEVTELPACSQCGGQRIFEFQLMPALVSMLKSANL GLSVEFGTILVYTCEKSCWPPNHQTPMEEFCIIQEDPDELLFK
Research Area	Cell Biology
Source	E.coli
Target Names	PDCD2L
Protein Names	Recommended name: Programmed cell death protein 2-like
Expression Region	1-358aa
Notes	Repeated freezing and thawing is not recommended. Store working aliquots at 4°C for up to one week.
Tag Info	N-terminal GST-tagged
Mol. Weight	66.3kDa
Protein Length	Full Length
Image	



(Tris-Glycine gel) Discontinuous SDS-PAGE (reduced) with 5% enrichment gel and 15% separation gel.

Reconstitution

We recommend that this vial be briefly centrifuged prior to opening to bring the contents to the bottom. Please reconstitute protein in deionized sterile water to a concentration of 0.1-1.0 mg/mL. We recommend to add 5-50% of glycerol (final concentration) and aliquot for long-term storage at -20°C/-80°C. Our default final concentration of glycerol is 50%. Customers could use it as reference.

Shelf Life

The shelf life is related to many factors, storage state, buffer ingredients, storage temperature and the stability of the protein itself. Generally, the shelf life of liquid form is 6 months at -20°C/-80°C. The shelf life of lyophilized form is 12 months at -20°C/-80°C.