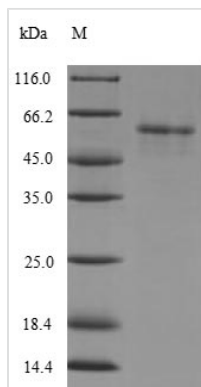




Recombinant Human [Pyruvate dehydrogenase [acetyl-transferring]]-phosphatase 2, mitochondrial (PDP2)

Product Code	CSB-EP868395HU
Relevance	Catalyzes the dephosphorylation and concomitant reactivation of the alpha subunit of the E1 component of the pyruvate dehydrogenase complex.
Abbreviation	Recombinant Human PDP2 protein
Storage	The shelf life is related to many factors, storage state, buffer ingredients, storage temperature and the stability of the protein itself. Generally, the shelf life of liquid form is 6 months at -20°C/-80°C. The shelf life of lyophilized form is 12 months at -20°C/-80°C.
Uniprot No.	Q9P2J9
Alias	Pyruvate dehydrogenase phosphatase catalytic subunit 2 ;PDPC 2
Product Type	Recombinant Protein
Immunogen Species	Homo sapiens (Human)
Purity	Greater than 90% as determined by SDS-PAGE.
Sequence	STEEDDFHLQLSPEQINEVLRAGETTHKILDLESVPNSVLRVFESNQLAANSPV EDRRGVASCLQTNGLMFGIFDGHGGHACAQAVSERLFYYVAVSLMSHQTTLEH MEGAMESMKPLLPIHLWLKHPGDSIYKDVTSVHLDHLRVYWQELLDLHMEMG LSIEEALMYSFQRLDSDISLEIQAPLEDEVTRNLSLQVAFSGATACMAHVVDGIHL HVANAGDCRAILGVQEDNGMWSCPLTRDHNAWNQAELSRLKREHPESDR TIIMEDRLLGVLPICRAFGDVQLKWSKELQRSILERGFNTEALNIYQFTPPHYTT PPYLTAEPVETYHRLRPQDKFLVLASDGLWDMLSNEDEVVRLVVGHLAEADWH KTDLAQRPANLGLMQSLLLQRKASGLHEADQNAATRLIRHAIGNNEYGEMEAE RLAAMLTLPEDLARMYRDDITVTVVYFNSESIGAYYKGG
Research Area	Metabolism
Source	E.coli
Target Names	PDP2
Expression Region	67-529aa
Notes	Repeated freezing and thawing is not recommended. Store working aliquots at 4°C for up to one week.
Tag Info	N-terminal 6xHis-tagged
Mol. Weight	56.4kDa
Protein Length	Full Length of Mature Protein
Image	



(Tris-Glycine gel) Discontinuous SDS-PAGE (reduced) with 5% enrichment gel and 15% separation gel.

Description

The recombinant Human PDP2 protein expression in e.coli cells requires the insertion of a DNA fragment encoding the Human PDP2 protein (67-529aa) into a plasmid vector and the transferral of this vector into e.coli cells. The positive cells are screened, cultured, and then induced to express the PDP2 protein. The protein carries a N-terminal 6xHis tag. The cells are lysed to harvest the recombinant Human PDP2 protein, which is purified through affinity purification and then detected by SDS-PAGE and subsequent staining of the gel with Coomassie Brilliant Blue. The purity of this recombinant Human PDP2 protein is over 90%.

Reconstitution

We recommend that this vial be briefly centrifuged prior to opening to bring the contents to the bottom. Please reconstitute protein in deionized sterile water to a concentration of 0.1-1.0 mg/mL. We recommend to add 5-50% of glycerol (final concentration) and aliquot for long-term storage at -20°C/-80°C. Our default final concentration of glycerol is 50%. Customers could use it as reference.

Shelf Life

The shelf life is related to many factors, storage state, buffer ingredients, storage temperature and the stability of the protein itself. Generally, the shelf life of liquid form is 6 months at -20°C/-80°C. The shelf life of lyophilized form is 12 months at -20°C/-80°C.