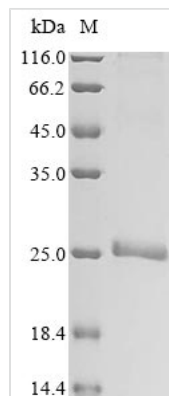




# Recombinant Human Placenta-specific protein 1 (PLAC1)

<b>Product Code</b>	CSB-EP867193HU
<b>Abbreviation</b>	Recombinant Human PLAC1 protein
<b>Storage</b>	The shelf life is related to many factors, storage state, buffer ingredients, storage temperature and the stability of the protein itself. Generally, the shelf life of liquid form is 6 months at -20°C/-80°C. The shelf life of lyophilized form is 12 months at -20°C/-80°C.
<b>Uniprot No.</b>	Q9HBJ0
<b>Form</b>	Liquid or Lyophilized powder
<b>Storage Buffer</b>	If the delivery form is liquid, the default storage buffer is Tris/PBS-based buffer, 5%-50% glycerol. If the delivery form is lyophilized powder, the buffer before lyophilization is Tris/PBS-based buffer, 6% Trehalose.
<b>Product Type</b>	Recombinant Protein
<b>Immunogen Species</b>	Homo sapiens (Human)
<b>Purity</b>	Greater than 90% as determined by SDS-PAGE.
<b>Sequence</b>	QSPMTVLC SIDWFMVTVHPFMLNNDVCVHFHELHLGLGCPPNHVQPHAYQFT YRVTECGIRAKAVSQDMVIYSTEIHYSKGTSPSKFVIPVSCAAPQKSPWLTKPC SMRVASKSRATAQKDEKCYEVFSLSQSSQRPNCDCPPCVFSEEEHTQVPCH QAGAQEAQPLQPSHFLDISEDWSLHTDDMIGSM
<b>Research Area</b>	Developmental Biology
<b>Source</b>	E.coli
<b>Target Names</b>	PLAC1
<b>Expression Region</b>	23-212aa
<b>Notes</b>	Repeated freezing and thawing is not recommended. Store working aliquots at 4°C for up to one week.
<b>Tag Info</b>	N-terminal 6xHis-tagged
<b>Mol. Weight</b>	23.3 kDa
<b>Protein Length</b>	Full Length of Mature Protein
<b>Image</b>	



(Tris-Glycine gel) Discontinuous SDS-PAGE (reduced) with 5% enrichment gel and 15% separation gel.

## Description

Amino acids 23-212 constitute the expression domain of recombinant Human PLAC1. This PLAC1 protein is theoretically predicted to have a molecular weight of 23.3 kDa. This PLAC1 recombinant protein is manufactured in e.coli. The PLAC1 gene fragment has been modified by fusing the N-terminal 6xHis tag, providing convenience in detecting and purifying the recombinant PLAC1 protein during the following stages.

Human placenta-specific protein 1 (PLAC1) is a protein primarily associated with placental development and function. PLAC1 is expressed predominantly in the placenta, specifically in trophoblast cells, indicating its role in fetal-maternal interactions. PLAC1 is implicated in key processes such as trophoblast invasion, a critical step for successful implantation and placental development. Aberrant PLAC1 expression has been observed in certain pregnancy-related disorders, suggesting its potential relevance as a biomarker or factor in complications like preeclampsia.

## Reconstitution

We recommend that this vial be briefly centrifuged prior to opening to bring the contents to the bottom. Please reconstitute protein in deionized sterile water to a concentration of 0.1-1.0 mg/mL. We recommend to add 5-50% of glycerol (final concentration) and aliquot for long-term storage at -20°C/-80°C. Our default final concentration of glycerol is 50%. Customers could use it as reference.

## Shelf Life

The shelf life is related to many factors, storage state, buffer ingredients, storage temperature and the stability of the protein itself. Generally, the shelf life of liquid form is 6 months at -20°C/-80°C. The shelf life of lyophilized form is 12 months at -20°C/-80°C.