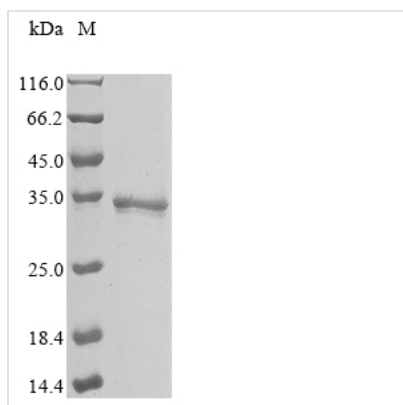




# Recombinant Human PITH domain-containing protein 1 (PITHD1)

<b>Product Code</b>	CSB-EP867109HU
<b>Abbreviation</b>	Recombinant Human PITHD1 protein
<b>Storage</b>	The shelf life is related to many factors, storage state, buffer ingredients, storage temperature and the stability of the protein itself. Generally, the shelf life of liquid form is 6 months at -20°C/-80°C. The shelf life of lyophilized form is 12 months at -20°C/-80°C.
<b>Uniprot No.</b>	Q9GZP4
<b>Storage Buffer</b>	Tris-based buffer,50% glycerol
<b>Product Type</b>	Recombinant Proteins
<b>Immunogen Species</b>	Homo sapiens (Human)
<b>Purity</b>	Greater than 90% as determined by SDS-PAGE.
<b>Sequence</b>	MSHGHSHGGGGCRCAAEREPEQRLAYGLYLRLIDLERLQCLNESREGSG RGVFKPWEERTDRSKFVESDADEELLFNIPFTGNVKLGIIIMGEDDDSHPSSEM RLYKNIPQMSFDDTEREPDQTFSLNRDLTGELEYATKISRFSNVYHLSIHISKNF GADTTKVFIYIGLRGEWTELRRHEVTICNYEASANPADHRVHQVTPQTHFIS
<b>Research Area</b>	Others
<b>Source</b>	E.coli
<b>Target Names</b>	PITHD1
<b>Protein Names</b>	Recommended name: PITH domain-containing protein 1
<b>Expression Region</b>	1-211aa
<b>Notes</b>	Repeated freezing and thawing is not recommended. Store working aliquots at 4°C for up to one week.
<b>Tag Info</b>	N-terminal 10xHis-tagged and C-terminal Myc-tagged
<b>Mol. Weight</b>	31.6 kDa
<b>Protein Length</b>	Full Length
<b>Image</b>	



(Tris-Glycine gel) Discontinuous SDS-PAGE (reduced) with 5% enrichment gel and 15% separation gel.

## Description

Synthesizing the recombinant Human PITHD1 protein generally involves integrating the DNA fragment that encodes the Human PITHD1 protein (1-211aa) into a plasmid, introducing the recombinant plasmid into e.coli cells, followed by the selection and culturing of positive e.coli cells, induction of protein expression, and subsequent cell lysis. A N-terminal 10xHis tag and C-terminal Myc tag is fused to the protein. The protein is purified through affinity purification, and SDS-PAGE analysis is conducted to confirm the presence of the protein and determine its purity. The protein's purity surpasses 90%.

## Shelf Life

The shelf life is related to many factors, storage state, buffer ingredients, storage temperature and the stability of the protein itself. Generally, the shelf life of liquid form is 6 months at -20°C/-80°C. The shelf life of lyophilized form is 12 months at -20°C/-80°C.