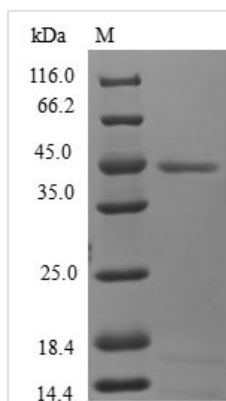




Recombinant Human Mitochondrial fission process protein 1 (MTFP1)

Product Code	CSB-EP866212HU
Relevance	Involved in the mitochondrial division probably by regulating membrane fission. Loss-of-function induces the release of cytochrome c, which activates the caspase cascade and leads to apoptosis.
Abbreviation	Recombinant Human MTFP1 protein
Storage	The shelf life is related to many factors, storage state, buffer ingredients, storage temperature and the stability of the protein itself. Generally, the shelf life of liquid form is 6 months at -20°C/-80°C. The shelf life of lyophilized form is 12 months at -20°C/-80°C.
Uniprot No.	Q9UDX5
Alias	Mitochondrial 18 kDa protein
Product Type	Recombinant Protein
Immunogen Species	Homo sapiens (Human)
Purity	Greater than 90% as determined by SDS-PAGE.
Sequence	MSEPQPRGAERDLRYDTWVRYLGYANEVGEAFRSLVPAAVVWLSYGVASSY VLADAIDKGKKAGEVPSPEAGRSARVTVAVVDTFVWQALASVAIPGFTINRVC AASLYVLGTATRWPLAVRKWTTTALGLLTPIIIHPIDRSVDFLDSSLRKLYPTV GKPSSS
Research Area	Tags & Cell Markers
Source	E.coli
Target Names	MTFP1
Expression Region	1-166aa
Notes	Repeated freezing and thawing is not recommended. Store working aliquots at 4°C for up to one week.
Tag Info	N-terminal GST-tagged
Mol. Weight	45.0kDa
Protein Length	Full Length
Image	



(Tris-Glycine gel) Discontinuous SDS-PAGE (reduced) with 5% enrichment gel and 15% separation gel.

Reconstitution

We recommend that this vial be briefly centrifuged prior to opening to bring the contents to the bottom. Please reconstitute protein in deionized sterile water to a concentration of 0.1-1.0 mg/mL. We recommend to add 5-50% of glycerol (final concentration) and aliquot for long-term storage at -20°C/-80°C. Our default final concentration of glycerol is 50%. Customers could use it as reference.

Shelf Life

The shelf life is related to many factors, storage state, buffer ingredients, storage temperature and the stability of the protein itself. Generally, the shelf life of liquid form is 6 months at -20°C/-80°C. The shelf life of lyophilized form is 12 months at -20°C/-80°C.