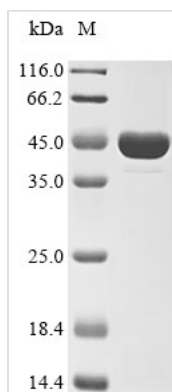




# Recombinant Human Diablo homolog, mitochondrial (DIABLO)

<b>Product Code</b>	CSB-EP865113HU
<b>Abbreviation</b>	Recombinant Human DIABLO protein
<b>Storage</b>	The shelf life is related to many factors, storage state, buffer ingredients, storage temperature and the stability of the protein itself. Generally, the shelf life of liquid form is 6 months at -20°C/-80°C. The shelf life of lyophilized form is 12 months at -20°C/-80°C.
<b>Uniprot No.</b>	Q9NR28
<b>Storage Buffer</b>	Tris-based buffer,50% glycerol
<b>Product Type</b>	Recombinant Proteins
<b>Immunogen Species</b>	Homo sapiens (Human)
<b>Purity</b>	Greater than 85% as determined by SDS-PAGE.
<b>Sequence</b>	AVPIAQKSEPHSLSSEALMRRVSLVTDSTSTFLSQTTYALIEAITEYTKAVYTLT SLYRQYTSLLGKMNSEEEDEVWQVIIGARAEMTSKHQEYLLKLETTWMTAVGL SEMAAEAAYQTGADQASITARNHIQLVLQVEEVHQLSRKAETKLAEAQIEELR QKTQEEGEERAEESEQEAYLRED
<b>Research Area</b>	Cancer
<b>Source</b>	E.coli
<b>Target Names</b>	DIABLO
<b>Protein Names</b>	Recommended name: Diablo homolog, mitochondrial Alternative name(s): Direct IAP-binding protein with low pI Second mitochondria-derived activator of caspase Short name= Smac
<b>Expression Region</b>	56-239aa
<b>Notes</b>	Repeated freezing and thawing is not recommended. Store working aliquots at 4°C for up to one week.
<b>Tag Info</b>	N-terminal GST-tagged
<b>Mol. Weight</b>	47.4 kDa
<b>Protein Length</b>	Full Length of Mature Protein
<b>Image</b>	



(Tris-Glycine gel) Discontinuous SDS-PAGE (reduced) with 5% enrichment gel and 15% separation gel.

## Description

Synthesizing the recombinant Human DIABLO protein generally involves integrating the DNA fragment that encodes the Human DIABLO protein (56-239aa) into a plasmid, introducing the recombinant plasmid into e.coli cells, followed by the selection and culturing of positive e.coli cells, induction of protein expression, and subsequent cell lysis. A N-terminal GST tag is fused to the protein. The protein is purified through affinity purification, and SDS-PAGE analysis is conducted to confirm the presence of the protein and determine its purity. The protein's purity surpasses 85%.

## Shelf Life

The shelf life is related to many factors, storage state, buffer ingredients, storage temperature and the stability of the protein itself. Generally, the shelf life of liquid form is 6 months at -20°C/-80°C. The shelf life of lyophilized form is 12 months at -20°C/-80°C.