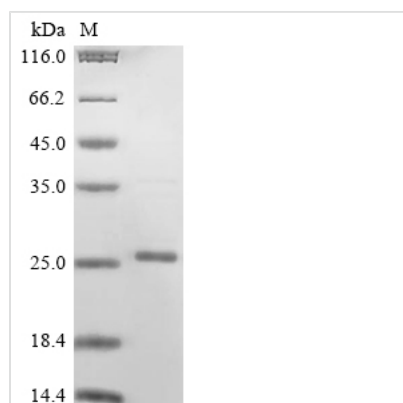




Recombinant Human Group XIIA secretory phospholipase A2 (PLA2G12A)

Product Code	CSB-EP863638HU(A4)
Abbreviation	Recombinant Human PLA2G12A protein
Storage	The shelf life is related to many factors, storage state, buffer ingredients, storage temperature and the stability of the protein itself. Generally, the shelf life of liquid form is 6 months at -20°C/-80°C. The shelf life of lyophilized form is 12 months at -20°C/-80°C.
Uniprot No.	Q9BZM1
Storage Buffer	Tris-based buffer,50% glycerol
Product Type	Recombinant Proteins
Immunogen Species	Homo sapiens (Human)
Purity	Greater than 85% as determined by SDS-PAGE.
Sequence	QEQAQTTDWRATLKTIRNGVHKIDTYLNAALDLLGGEDGLCQYKCSDGSKPFP RYGYKPSPPNGCGSPLFGVHLNIGIPSLTKCCNQHDRCYETCGKSKNDCDEE FQYCLSKICRDVQKTLGLTQHVQACETTVELLFDSVIHLGCKPYLDSQRAACR CHYEKTDL
Research Area	Cardiovascular
Source	E.coli
Target Names	PLA2G12A
Expression Region	23-189aa
Notes	Repeated freezing and thawing is not recommended. Store working aliquots at 4°C for up to one week.
Tag Info	N-terminal 10xHis-tagged and C-terminal Myc-tagged
Mol. Weight	26.2 kDa
Protein Length	Full Length of Mature Protein

Image



(Tris-Glycine gel) Discontinuous SDS-PAGE (reduced) with 5% enrichment gel and 15% separation gel.



Shelf Life

The shelf life is related to many factors, storage state, buffer ingredients, storage temperature and the stability of the protein itself.

Generally, the shelf life of liquid form is 6 months at -20°C/-80°C. The shelf life of lyophilized form is 12 months at -20°C/-80°C.