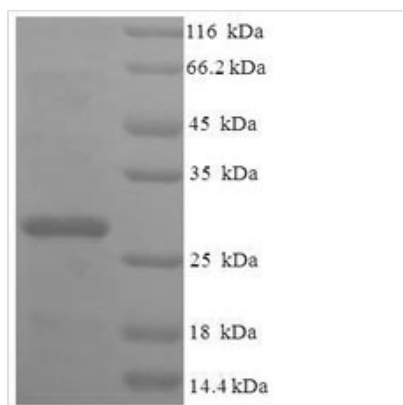




Recombinant Human 39S ribosomal protein L20, mitochondrial (MRPL20), partial

Product Code	CSB-EP863153HU
Abbreviation	Recombinant Human MRPL20 protein, partial
Storage	The shelf life is related to many factors, storage state, buffer ingredients, storage temperature and the stability of the protein itself. Generally, the shelf life of liquid form is 6 months at -20°C/-80°C. The shelf life of lyophilized form is 12 months at -20°C/-80°C.
Uniprot No.	Q9BYC9
Product Type	Recombinant Proteins
Immunogen Species	Homo sapiens (Human)
Purity	Greater than 90% as determined by SDS-PAGE.
Sequence	VIRAFVKCTKARYLKKNMRTLWINRITAASQEHGLKYPALIGNLVKCQVELNR KVLADLAIYEPKTFKSLAALASRRRHEGFAAALGDGKEPEGIFSRVVQYH
Research Area	Epigenetics and Nuclear Signaling
Source	E.coli
Target Names	MRPL20
Expression Region	46-149aa
Notes	Repeated freezing and thawing is not recommended. Store working aliquots at 4°C for up to one week.
Tag Info	N-terminal 6xHis-SUMO-tagged
Mol. Weight	27.8kDa
Protein Length	Partial

Image



(Tris-Glycine gel) Discontinuous SDS-PAGE (reduced) with 5% enrichment gel and 15% separation gel.

Shelf Life

The shelf life is related to many factors, storage state, buffer ingredients, storage temperature and the stability of the protein itself. Generally, the shelf life of liquid form is 6 months at -20°C/-80°C. The shelf life



of lyophilized form is 12 months at -20°C/-80°C.