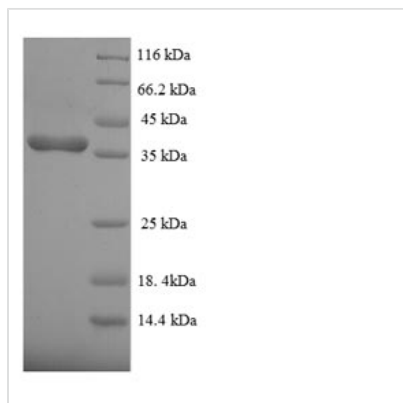




Recombinant Human Dual specificity protein phosphatase 26 (DUSP26)

Product Code	CSB-EP863128HU
Relevance	Inactivates MAPK1 and MAPK3 which leads to dephosphorylation of heat shock factor protein 4 and a reduction in its DNA-binding activity. Inhibits MAP kinase p38 by dephosphorylating it and inhibits p38-mediated apoptosis in anaplastic thyroid cancer cells. Can also induce activation of MAP kinase p38 and c-Jun N-terminal kinase (JNK).
Abbreviation	Recombinant Human DUSP26 protein
Storage	The shelf life is related to many factors, storage state, buffer ingredients, storage temperature and the stability of the protein itself. Generally, the shelf life of liquid form is 6 months at -20°C/-80°C. The shelf life of lyophilized form is 12 months at -20°C/-80°C.
Uniprot No.	Q9BV47
Alias	Dual specificity phosphatase SKRP3Low-molecular-mass dual-specificity phosphatase 4 ;DSP-4 ;LDP-4Mitogen-activated protein kinase phosphatase 8 ;MAP kinase phosphatase 8 ;MKP-8Novel amplified gene in thyroid anaplastic cancer
Product Type	Recombinant Protein
Immunogen Species	Homo sapiens (Human)
Purity	Greater than 90% as determined by SDS-PAGE.
Sequence	MCPGNWLWASMTFMARFSRSSSRSPVTRTRGTLEEMPTVQHPFLNVFELERL LYTGKTACNHADEVWPGLYLGDQDMANNRRELRRRLGITHVLNASHSRWRGT PEAYEGLGIRYLGVEAHDSPAFDMSIHFQTAADFIHRALSQPGGKILVHCAVGV SRSATLVLAYLMLYHHLTLVEAIKKVKDHRGIIPNRGFLRQLLALDRRLRQGLEA
Research Area	Signal Transduction
Source	E.coli
Target Names	DUSP26
Expression Region	1-211aa
Notes	Repeated freezing and thawing is not recommended. Store working aliquots at 4°C for up to one week.
Tag Info	N-terminal 6xHis-SUMO-tagged
Mol. Weight	39.9kDa
Protein Length	Full Length
Image	



(Tris-Glycine gel) Discontinuous SDS-PAGE (reduced) with 5% enrichment gel and 15% separation gel.

Reconstitution

We recommend that this vial be briefly centrifuged prior to opening to bring the contents to the bottom. Please reconstitute protein in deionized sterile water to a concentration of 0.1-1.0 mg/mL. We recommend to add 5-50% of glycerol (final concentration) and aliquot for long-term storage at -20°C/-80°C. Our default final concentration of glycerol is 50%. Customers could use it as reference.

Shelf Life

The shelf life is related to many factors, storage state, buffer ingredients, storage temperature and the stability of the protein itself. Generally, the shelf life of liquid form is 6 months at -20°C/-80°C. The shelf life of lyophilized form is 12 months at -20°C/-80°C.