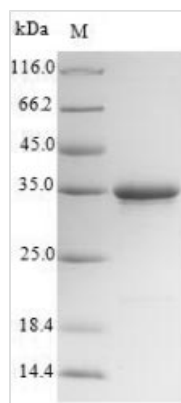




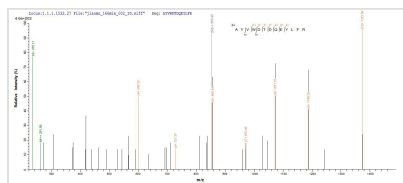
Recombinant Mouse Collectrin (Cltrn), Partial

Product Code	CSB-EP861705MO
Relevance	Regulator of SNARE complex function. Stimulator of beta cell replication.
Abbreviation	Recombinant Mouse Cltrn protein, partial
Storage	The shelf life is related to many factors, storage state, buffer ingredients, storage temperature and the stability of the protein itself. Generally, the shelf life of liquid form is 6 months at -20°C/-80°C. The shelf life of lyophilized form is 12 months at -20°C/-80°C.
Uniprot No.	Q9ESG4
Alias	Transmembrane protein 27
Product Type	Recombinant Protein
Immunogen Species	Mus musculus (Mouse)
Purity	Greater than 90% as determined by SDS-PAGE.
Sequence	ELCHPDAENAFKVRLSIRAALGDKAYVWDTDQEYLFRAMVAFSMRKVPNREA TEISHVLLCNITQRVSFWFVVTDPNNYTLPAAEVQSAIRKNRNRINSAFFLDD HTLEFLKIPSTLAPMEPSVP
Research Area	Signal Transduction
Source	E.coli
Target Names	Cltrn
Expression Region	15-141aa
Notes	Repeated freezing and thawing is not recommended. Store working aliquots at 4°C for up to one week.
Tag Info	N-terminal 10xHis-SUMO-tagged and C-terminal Myc-tagged
Mol. Weight	34.5kDa
Protein Length	Extracellular Domain

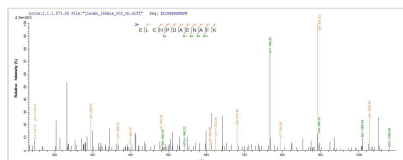
Image



(Tris-Glycine gel) Discontinuous SDS-PAGE (reduced) with 5% enrichment gel and 15% separation gel.



Based on the SEQUEST from database of E.coli host and target protein, the LC-MS/MS Analysis result of CSB-EP861705MO could indicate that this peptide derived from E.coli-expressed Mus musculus (Mouse) Tmem27.



Based on the SEQUEST from database of E.coli host and target protein, the LC-MS/MS Analysis result of CSB-EP861705MO could indicate that this peptide derived from E.coli-expressed Mus musculus (Mouse) Tmem27.

Description

Synthesizing the recombinant Mouse Cltrn protein generally involves integrating the DNA fragment that encodes the Mouse Cltrn protein (15-141aa) into a plasmid, introducing the recombinant plasmid into e.coli cells, followed by the selection and culturing of positive e.coli cells, induction of protein expression, and subsequent cell lysis. A N-terminal 10xHis-SUMO tag and C-terminal Myc tag is fused to the protein. The protein is purified through affinity purification, and SDS-PAGE analysis is conducted to confirm the presence of the protein and determine its purity. The protein's purity surpasses 90%.

Reconstitution

We recommend that this vial be briefly centrifuged prior to opening to bring the contents to the bottom. Please reconstitute protein in deionized sterile water to a concentration of 0.1-1.0 mg/mL. We recommend to add 5-50% of glycerol (final concentration) and aliquot for long-term storage at -20°C/-80°C. Our default final concentration of glycerol is 50%. Customers could use it as reference.

Shelf Life

The shelf life is related to many factors, storage state, buffer ingredients, storage temperature and the stability of the protein itself. Generally, the shelf life of liquid form is 6 months at -20°C/-80°C. The shelf life of lyophilized form is 12 months at -20°C/-80°C.