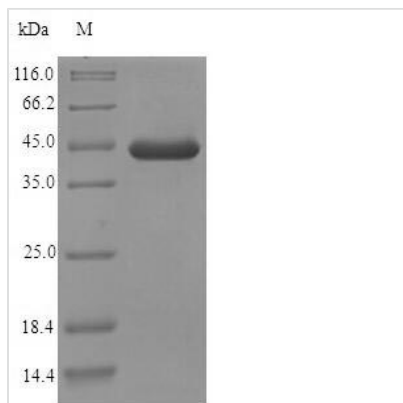




Recombinant Mouse EF-hand domain-containing protein D2 (Efhd2)

Product Code	CSB-EP861577MO
Relevance	May regulate B-cell receptor (BCR)-induced immature and primary B-cell apoptosis. Plays a role as negative regulator of the canonical NF-kappa-B-activating branch. Controls spontaneous apoptosis through the regulation of BCL2L1 abundance.
Abbreviation	Recombinant Mouse Efhd2 protein
Storage	The shelf life is related to many factors, storage state, buffer ingredients, storage temperature and the stability of the protein itself. Generally, the shelf life of liquid form is 6 months at -20°C/-80°C. The shelf life of lyophilized form is 12 months at -20°C/-80°C.
Uniprot No.	Q9D8Y0
Alias	Swiprosin-1
Product Type	Recombinant Protein
Immunogen Species	Mus musculus (Mouse)
Purity	Greater than 90% as determined by SDS-PAGE.
Sequence	ATDELASKLSRRLQMEGEGGEATEQPGLNGAAAAAAEAPDETAQALGSADD ELSAKLLRRADLNQGIGEPQSPSRRVFNPYTEFKEFSRKQIKDMEKMFQYDA GRDGFIDLMELKLMMEKLGAPQTHLGLKSMIQEVDEDFDSKLSFRELLIFRKA AAGELQEDSGLQVLARLSEIDVSTEGVKGAKNFFFEAKVQAINVSSRFEEEEIKAE QEERKKQAEVVKQRKA AFKELQSTFK
Research Area	Signal Transduction
Source	E.coli
Target Names	Efhd2
Protein Names	Recommended name: EF-hand domain-containing protein D2 Alternative name(s): Swiprosin-1
Expression Region	2-240aa
Notes	Repeated freezing and thawing is not recommended. Store working aliquots at 4°C for up to one week.
Tag Info	N-terminal 6xHis-SUMO-tagged
Mol. Weight	42.7kDa
Protein Length	Full Length of Mature Protein
Image	



(Tris-Glycine gel) Discontinuous SDS-PAGE (reduced) with 5% enrichment gel and 15% separation gel.

Reconstitution

We recommend that this vial be briefly centrifuged prior to opening to bring the contents to the bottom. Please reconstitute protein in deionized sterile water to a concentration of 0.1-1.0 mg/mL. We recommend to add 5-50% of glycerol (final concentration) and aliquot for long-term storage at -20°C/-80°C. Our default final concentration of glycerol is 50%. Customers could use it as reference.

Shelf Life

The shelf life is related to many factors, storage state, buffer ingredients, storage temperature and the stability of the protein itself. Generally, the shelf life of liquid form is 6 months at -20°C/-80°C. The shelf life of lyophilized form is 12 months at -20°C/-80°C.