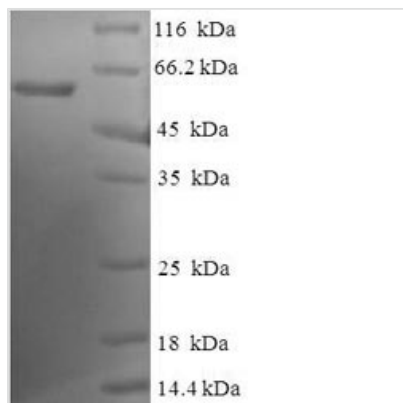




# Recombinant Human Endoplasmic reticulum resident protein 44 (ERP44)

<b>Product Code</b>	CSB-EP861125HU
<b>Relevance</b>	Mediates thiol-dependent retention in the early secretory pathway, forming mixed disulfides with substrate proteins through its conserved CRFS motif. Inhibits the calcium channel activity of ITPR1. May have a role in the control of oxidative protein folding in the endoplasmic reticulum. Required to retain ERO1L and ERO1LB in the endoplasmic reticulum.
<b>Abbreviation</b>	Recombinant Human ERP44 protein
<b>Storage</b>	The shelf life is related to many factors, storage state, buffer ingredients, storage temperature and the stability of the protein itself. Generally, the shelf life of liquid form is 6 months at -20°C/-80°C. The shelf life of lyophilized form is 12 months at -20°C/-80°C.
<b>Uniprot No.</b>	Q9BS26
<b>Alias</b>	Thioredoxin domain-containing protein 4
<b>Product Type</b>	Recombinant Protein
<b>Immunogen Species</b>	Homo sapiens (Human)
<b>Purity</b>	Greater than 90% as determined by SDS-PAGE.
<b>Sequence</b>	EITSLDTENIDEILNNADVALVNFYADWCRFSQMLHPIFEEASDVIKEEFPNENQ VVFARVDCDQHSDIAQRYRISKYPTLKLFRNGMMMCREYRGQRSVKALADYIR QQKSDPIQEIRDLAEITTLDRSKRNIIGYFEQKSDSNYRVFERVANILHDDCAFL SAFGDVSKPERYSGDNIIYKPPGHSAPDMVYLGAMTNFDVTYNWIQDKCVPLV REITFENGEELEEGLPFLILFHMKEDTESLEIFQNEVARQLISEKGTINFLHADC DKFRHPLLHIQKTPADCPVIAIDSFRHMYVFGDFKDVLPGLKQFVFDLHSGKL HREFHHGPDPTDTAPGEQAQDVASSPPESSFQKLAPSEYRYTLLRDRDEL
<b>Research Area</b>	Metabolism
<b>Source</b>	E.coli
<b>Target Names</b>	ERP44
<b>Expression Region</b>	30-406aa
<b>Notes</b>	Repeated freezing and thawing is not recommended. Store working aliquots at 4°C for up to one week.
<b>Tag Info</b>	N-terminal 6xHis-SUMO-tagged
<b>Mol. Weight</b>	59.7kDa
<b>Protein Length</b>	Full Length of Mature Protein
<b>Image</b>	



(Tris-Glycine gel) Discontinuous SDS-PAGE (reduced) with 5% enrichment gel and 15% separation gel.

### Reconstitution

We recommend that this vial be briefly centrifuged prior to opening to bring the contents to the bottom. Please reconstitute protein in deionized sterile water to a concentration of 0.1-1.0 mg/mL. We recommend to add 5-50% of glycerol (final concentration) and aliquot for long-term storage at -20°C/-80°C. Our default final concentration of glycerol is 50%. Customers could use it as reference.

### Shelf Life

The shelf life is related to many factors, storage state, buffer ingredients, storage temperature and the stability of the protein itself. Generally, the shelf life of liquid form is 6 months at -20°C/-80°C. The shelf life of lyophilized form is 12 months at -20°C/-80°C.