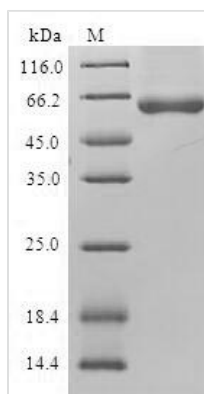




Recombinant Human Gamma-soluble NSF attachment protein (NAPG)

Product Code	CSB-EP860352HU
Relevance	Required for vesicular transport between the endoplasmic reticulum and the Golgi apparatus.
Abbreviation	Recombinant Human NAPG protein
Storage	The shelf life is related to many factors, storage state, buffer ingredients, storage temperature and the stability of the protein itself. Generally, the shelf life of liquid form is 6 months at -20°C/-80°C. The shelf life of lyophilized form is 12 months at -20°C/-80°C.
Uniprot No.	Q99747
Alias	N-ethylmaleimide-sensitive factor attachment protein gamma
Product Type	Recombinant Protein
Immunogen Species	Homo sapiens (Human)
Purity	Greater than 90% as determined by SDS-PAGE.
Sequence	MAAQKINEGLEHLAKAEKYLKTGFLKWKPDYDSAASEYGKAAVAFKNAKQFE QAKDACLREAVAHENNRALFHAAKAYEQAGMMLKEMQKLPEAVQLIEKASMM YLENGTPDTAAMALERAGKLIENVDPKAVQLYQQTANVFENDERLRQAVELL GKASRLLVRGRRFDEAALSIQKEKNIYKEIENYPTCYKKTIAQVLVHLHRNDYVA AERCVRESYSIPGFNGSEDCAALEQLLEGYDQQDQDQVSDVCNSPLFKYMDN DYAKLGLSLVVPGGGIKKKSPATPQAKPDGVTATAADEEEDEYSGGLC
Research Area	Neuroscience
Source	E.coli
Target Names	NAPG
Protein Names	Recommended name: Gamma-soluble NSF attachment protein Short name= SNAP-gamma Alternative name(s): N-ethylmaleimide-sensitive factor attachment protein gamma
Expression Region	1-312aa
Notes	Repeated freezing and thawing is not recommended. Store working aliquots at 4°C for up to one week.
Tag Info	N-terminal GST-tagged
Mol. Weight	61.7kDa
Protein Length	Full Length of BC001889
Image	



(Tris-Glycine gel) Discontinuous SDS-PAGE (reduced) with 5% enrichment gel and 15% separation gel.

Reconstitution

We recommend that this vial be briefly centrifuged prior to opening to bring the contents to the bottom. Please reconstitute protein in deionized sterile water to a concentration of 0.1-1.0 mg/mL. We recommend to add 5-50% of glycerol (final concentration) and aliquot for long-term storage at -20°C/-80°C. Our default final concentration of glycerol is 50%. Customers could use it as reference.

Shelf Life

The shelf life is related to many factors, storage state, buffer ingredients, storage temperature and the stability of the protein itself. Generally, the shelf life of liquid form is 6 months at -20°C/-80°C. The shelf life of lyophilized form is 12 months at -20°C/-80°C.