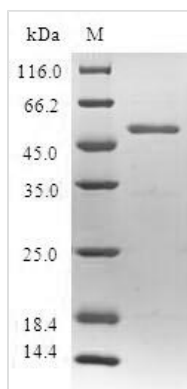




Recombinant Human Spindlin-2B (SPIN2B)

Product Code	CSB-EP859828HU
Relevance	Involved in the regulation of cell cycle progression, this activity is related to the inhibition of apoptosis following the removal of essential growth factors.
Abbreviation	Recombinant Human SPIN2B protein
Storage	The shelf life is related to many factors, storage state, buffer ingredients, storage temperature and the stability of the protein itself. Generally, the shelf life of liquid form is 6 months at -20°C/-80°C. The shelf life of lyophilized form is 12 months at -20°C/-80°C.
Uniprot No.	Q9BPZ2
Alias	Spindlin-like protein 2B
Product Type	Recombinant Protein
Immunogen Species	Homo sapiens (Human)
Purity	Greater than 90% as determined by SDS-PAGE.
Sequence	MKTPNAQEAEGQQTRAAGRATGSANMTKKKVSQKKQRGRPSSQPRRNIVG CRISHGWKEGDEPITQWKGTVLDQVPINPSLYLVKYDGIDCVYGLELHRDERV LSLKILSDRVASSHISDANLANTIIGKAVEHMFEGEHGSKDEWRGMVLAQAPIM KAWFYITYEKDPVLYMYQLDDYKEGDLRIMPESSESPPTEREPGGVVDGLIG KHVEYTKEDGSKRIGMVIHQVEAKPSVYFIKFDDDFHIYVYDLVKKS
Research Area	others
Source	E.coli
Target Names	SPIN2B
Protein Names	Recommended name: Spindlin-2B Alternative name(s): Spindlin-like protein 2B Short name= SPIN-2 Short name= SPIN-2B
Expression Region	1-258aa
Notes	Repeated freezing and thawing is not recommended. Store working aliquots at 4°C for up to one week.
Tag Info	N-terminal GST-tagged
Mol. Weight	56.2kDa
Protein Length	Full Length
Image	



(Tris-Glycine gel) Discontinuous SDS-PAGE (reduced) with 5% enrichment gel and 15% separation gel.

Reconstitution

We recommend that this vial be briefly centrifuged prior to opening to bring the contents to the bottom. Please reconstitute protein in deionized sterile water to a concentration of 0.1-1.0 mg/mL. We recommend to add 5-50% of glycerol (final concentration) and aliquot for long-term storage at -20°C/-80°C. Our default final concentration of glycerol is 50%. Customers could use it as reference.

Shelf Life

The shelf life is related to many factors, storage state, buffer ingredients, storage temperature and the stability of the protein itself. Generally, the shelf life of liquid form is 6 months at -20°C/-80°C. The shelf life of lyophilized form is 12 months at -20°C/-80°C.