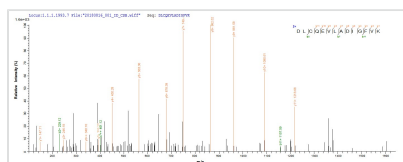




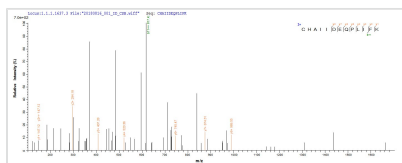
# Recombinant Mouse LIM and senescent cell antigen-like-containing domain protein 1 (Lims1)

<b>Product Code</b>	CSB-EP859129MO
<b>Abbreviation</b>	Recombinant Mouse Lims1 protein
<b>Storage</b>	The shelf life is related to many factors, storage state, buffer ingredients, storage temperature and the stability of the protein itself. Generally, the shelf life of liquid form is 6 months at -20°C/-80°C. The shelf life of lyophilized form is 12 months at -20°C/-80°C.
<b>Uniprot No.</b>	Q99JW4
<b>Product Type</b>	Recombinant Protein
<b>Immunogen Species</b>	Mus musculus (Mouse)
<b>Purity</b>	Greater than 90% as determined by SDS-PAGE.
<b>Sequence</b>	ANALASATCERCKGGFAPAEEKIVNSNGELYHEQCFVCAQCFQQFPEGLFYEF EGRKYCEHDFQMLFAPCCHQCGEFIIGRVIKAMNNSWHPECFRCDLCQEVLA DIGFVKNAGRHLCPCHNREKARGLGKYICQKCHAIIDEQPLIFKNDPYHPDHF NCANCGKELTADARELKGELYCLPCHDKMGVPICGACRRPIEGRVVNAMGKQ WHVEHFVCAKCEKPFGLGHRHYERKGLAYCETHYNQLFGDVCFHCHNRVIEGDV VSALNKAWCVSCFACSTCNTKLTKNKFVEFDMKPVCKKCYEKFPLELKKRLK KLSETLGRK
<b>Research Area</b>	Cancer
<b>Source</b>	E.coli
<b>Target Names</b>	Lims1
<b>Protein Names</b>	Recommended name: LIM and senescent cell antigen-like-containing domain protein 1 Alternative name(s): Particularly interesting new Cys-His protein 1 Short name= PINCH-1
<b>Expression Region</b>	2-325aa
<b>Notes</b>	Repeated freezing and thawing is not recommended. Store working aliquots at 4°C for up to one week.
<b>Tag Info</b>	Tag-Free
<b>Mol. Weight</b>	37.1 kDa
<b>Protein Length</b>	Full Length of Mature Protein

## Image



Based on the SEQUEST from database of E.coli host and target protein, the LC-MS/MS Analysis result of CSB-EP859129MO could indicate that this peptide derived from E.coli-expressed Mus musculus (Mouse) Lims1.



Based on the SEQUEST from database of E.coli host and target protein, the LC-MS/MS Analysis result of CSB-EP859129MO could indicate that this peptide derived from E.coli-expressed Mus musculus (Mouse) Lims1.

## Reconstitution

We recommend that this vial be briefly centrifuged prior to opening to bring the contents to the bottom. Please reconstitute protein in deionized sterile water to a concentration of 0.1-1.0 mg/mL. We recommend to add 5-50% of glycerol (final concentration) and aliquot for long-term storage at -20°C/-80°C. Our default final concentration of glycerol is 50%. Customers could use it as reference.

## Shelf Life

The shelf life is related to many factors, storage state, buffer ingredients, storage temperature and the stability of the protein itself. Generally, the shelf life of liquid form is 6 months at -20°C/-80°C. The shelf life of lyophilized form is 12 months at -20°C/-80°C.