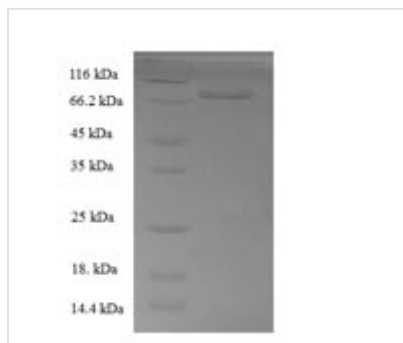




Recombinant Human Docking protein 1 (DOK1)

Product Code	CSB-EP858723HU
Relevance	DOK proteins are enzymatically inert adaptor or scaffolding proteins. They provide a docking platform for the assembly of multimolecular signaling complexes. DOK1 appears to be a negative regulator of the insulin signaling pathway. Modulates integrin activation by competing with talin for the same binding site on ITGB3.
Abbreviation	Recombinant Human DOK1 protein
Storage	The shelf life is related to many factors, storage state, buffer ingredients, storage temperature and the stability of the protein itself. Generally, the shelf life of liquid form is 6 months at -20°C/-80°C. The shelf life of lyophilized form is 12 months at -20°C/-80°C.
Uniprot No.	Q99704
Alias	Downstream of tyrosine kinase 1p62(dok)pp62
Product Type	Recombinant Protein
Immunogen Species	Homo sapiens (Human)
Purity	Greater than 90% as determined by SDS-PAGE.
Sequence	MDGAVMEGPLFLQSQRFGTKRWKRWAVLYPASPHGVARLEFFDHKGSSSG GGRGSSRRLDCKVIRLAECVSVAPVTVETPPEPGATAFRLDTAQRSHLLAADA PSSAAWVQTLCRNAFPKGSWTLAPTDNPPKLSALEMLENSLYSPTWEGSQF WVTVQRTEAAERCGLHGSYVLRVEAERLTLLTVGAQSQILEPLLSWPYTLLRR YGRDKVMFSFEAGRRCPSGPGTFTFQTAQGNDIFQAVETAHRQKAQGKAGQ GHDVLRADSHGEVAEGKLPSPPGPQELLDSPPALYAEPDLSLRIAPCPSQDS LYSDPLDSTSAQAGEGVQRKKPLYWDLYEHAQQQLLKAKLTDPKEDIPIYDEPE GLAPVPPQGLYDLPREPKDAWWCQARVKEEGYELPYNPATDDYAVPPPRST KPLLAPKPQGPAFPEPGTATGSGIKSHNSALYSQVQKSGASGSWDCGLSRVG TDKTGVKSEGST
Research Area	Cardiovascular
Source	E.coli
Target Names	DOK1
Expression Region	1-481aa
Notes	Repeated freezing and thawing is not recommended. Store working aliquots at 4°C for up to one week.
Tag Info	N-terminal 6xHis-SUMO-tagged
Mol. Weight	68.4kDa
Protein Length	Full Length
Image	



(Tris-Glycine gel) Discontinuous SDS-PAGE (reduced) with 5% enrichment gel and 15% separation gel.

Reconstitution

We recommend that this vial be briefly centrifuged prior to opening to bring the contents to the bottom. Please reconstitute protein in deionized sterile water to a concentration of 0.1-1.0 mg/mL. We recommend to add 5-50% of glycerol (final concentration) and aliquot for long-term storage at -20°C/-80°C. Our default final concentration of glycerol is 50%. Customers could use it as reference.

Shelf Life

The shelf life is related to many factors, storage state, buffer ingredients, storage temperature and the stability of the protein itself.

Generally, the shelf life of liquid form is 6 months at -20°C/-80°C. The shelf life of lyophilized form is 12 months at -20°C/-80°C.