



# Recombinant Human Segment polarity protein dishevelled homolog DVL-3(DVL3)

<b>Product Code</b>	CSB-EP856442HU
<b>Abbreviation</b>	Recombinant Human DVL3 protein
<b>Storage</b>	The shelf life is related to many factors, storage state, buffer ingredients, storage temperature and the stability of the protein itself. Generally, the shelf life of liquid form is 6 months at -20°C/-80°C. The shelf life of lyophilized form is 12 months at -20°C/-80°C.
<b>Uniprot No.</b>	Q92997
<b>Form</b>	Liquid or Lyophilized powder
<b>Storage Buffer</b>	If the delivery form is liquid, the default storage buffer is Tris/PBS-based buffer, 5%-50% glycerol. If the delivery form is lyophilized powder, the buffer before lyophilization is Tris/PBS-based buffer, 6% Trehalose.
<b>Product Type</b>	Recombinant Human Segment polarity protein dishevelled homolog DVL-3(DVL3)
<b>Immunogen Species</b>	Homo sapiens (Human)
<b>Sensitivity</b>	Not Test
<b>Purity</b>	Greater than 85% as determined by SDS-PAGE.
<b>Sequence</b>	<p>MGETKIIYHLDGQETPYLVKLPLPAERVTLADFKGVLQRPSYKFFFKSMDDDFG</p> <p>VVKEEISDDNAKLPCFNRRVSWLVSAEGSHDPAPFCADNPSELPPPMERT</p> <p>GGIGDSRPPSFHPHAGGGSQENLDNDTETDSLVSARERPRRRDGPEHATR</p> <p>LNGTAKGERRREPGGYDSSSTLMSSELETTSSFFDSDEDDSTSRFSSSTEQSS</p> <p>ASRLMRRHKRRRRKQKVSRIERSSSFSSITDSTMSLNIITVTLNMEKYNFLGISI</p> <p>VGQSNERGDGGIYIGSIMKGGAVAADGRIEPPGDMLLQVNEINFENMSNDDAVR</p> <p>VLREIVHKPGPITLTVAKCWDPSPRGCFTLPRSEPIRPIDPAAWVSHTAAMTGT</p> <p>FPAYGMSPSLSTITSTSSSITSSIPDTERLDDFHLHSIDMAAIVKAMASPEGL</p> <p>EVRDRMWLKITIPNAFIGSDVVDWLYHNVEGFTDRREARKYASNLLKAGFIRHT</p> <p>VNKITFSEQCYIIFGDLCGNMANLSLHDHGGSSGASDQDTLAPLPHPGAAPW</p> <p>PMAFPYQYPPPPHPYNPHPGFPELGYSYGGGSASSQHSEGSRSSGNSRSGS</p> <p>DRRKEKDPKAGDSKSGSGSESDHTTRSSLRGPRERAPSERSGPAASEHSH</p> <p>RSHHSLASSLRSHHTPSYGPPGVPPPLYGPPMLMPPPPAAMGPPGAPPGR</p> <p>DLASVPPELTASRQSFRMAMGNPSEFFVDVM</p>
<b>Research Area</b>	Cardiovascular
<b>Source</b>	E.coli
<b>Target Names</b>	DVL3
<b>Expression Region</b>	1-716aa
<b>Notes</b>	Repeated freezing and thawing is not recommended. Store working aliquots at 4°C for up to one week.


**Tag Info**

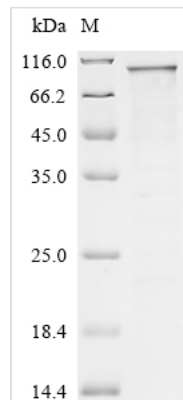
N-terminal 10xHis-tagged and C-terminal Myc-tagged

**Mol. Weight**

85.6 kDa

**Protein Length**

Full Length

**Image**


(Tris-Glycine gel) Discontinuous SDS-PAGE (reduced) with 5% enrichment gel and 15% separation gel.

**Reconstitution**

We recommend that this vial be briefly centrifuged prior to opening to bring the contents to the bottom. Please reconstitute protein in deionized sterile water to a concentration of 0.1-1.0 mg/mL. We recommend to add 5-50% of glycerol (final concentration) and aliquot for long-term storage at -20°C/-80°C. Our default final concentration of glycerol is 50%. Customers could use it as reference.

**Shelf Life**

The shelf life is related to many factors, storage state, buffer ingredients, storage temperature and the stability of the protein itself. Generally, the shelf life of liquid form is 6 months at -20°C/-80°C. The shelf life of lyophilized form is 12 months at -20°C/-80°C.